



OUTDOOR LIVING

ROBERT F. HENRY

TILE COMPANY

EST. 1933

Inspiring Homeowners for Generations



Expanding your living area outdoors
is like adding a room to your
home without the full cost of indoor
construction. Outdoor kitchens
and living spaces create an amazing
space to host family and friends,
Outdoor living areas are also
highly desirable in the real estate
market, potentially increasing
the resale value of homes.



OUTDOOR LIVING
DIGITAL CATALOG

PLEASE REFER TO A SALES REP AND PRODUCT FOR THE MOST UP-TO-DATE INFO

COVER: LAKE RIDGE 2CM PAVER, LAKE MARTIN

Porcelain anti-slip outdoor pavers offer a durable, low-maintenance solution, improve safety and aesthetics. They resist wear from extreme weather, and their anti-slip surface ensures secure footing in wet conditions, making them ideal for patios, walkways, and pool areas.

Natural stone is an excellent choice due to its durability, slip resistance, and timeless beauty. Popular options include slate for its rich texture and natural variation, and limestone for its elegant look and heat resistance.

Concrete tiles are strong and cost-effective, perfect for heavy-traffic areas. They can be molded into various shapes and colors, offering design flexibility, and are a sustainable, recyclable option.

Reclaimed bricks are eco-friendly being salvaged from old buildings, and they add character and sustainability to a project. No two reclaimed bricks are the same, offering a weathered, rustic appearance.

Porcelain slabs for outdoor countertops are durable, elegant, weather-resistant, and low-maintenance making them ideal for all climates. They resist stains, scratches, and UV rays and offer a sleek, modern aesthetic with easy cleaning. Porcelain countertops pair perfectly with Invisacook to create the perfect indoor and or outdoor kitchen.

OUTDOOR PORCELAIN
TILES + PAVERS

NATURAL STONE

CONCRETE TILES

RECLAIMED BRICKS

PORCELAIN SLABS
FOR WALLS, FLOORS
COUNTERTOPS

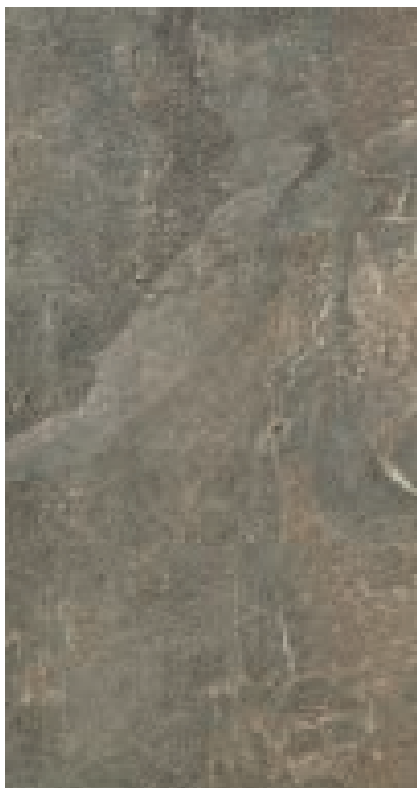
INVISACOOK

PORCELAIN TILES + PAVERS

MODERN SLATE

OUTDOOR TILES - 12" X 24"

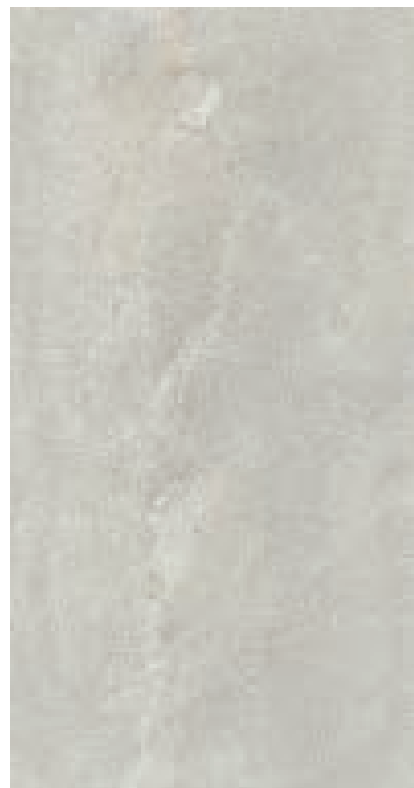
- Outdoor + Indoor • R11, Anti-Slip • 5/16" thick
- Outdoor, patios, pool decks, walkways, terraces, walls
- Floors, walls, showers • Residential + commercial
- Made in USA



Taupe ☒



Grey ☒



Ivory ☒



Charcoal ☒



Noce ☒

☒ In stock

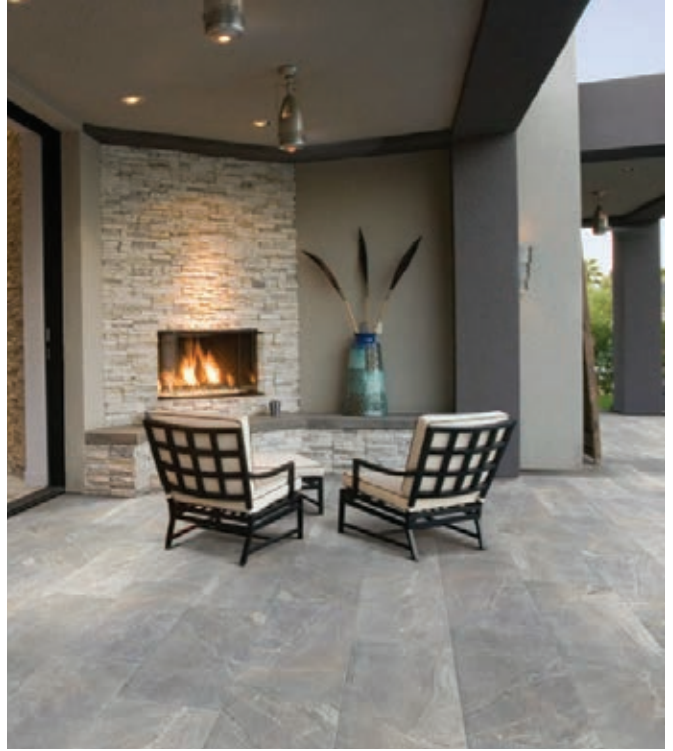
Images are for reference only; please refer to live product for an accurate color representation.

ROBERT E. HENRY
TILE COMPANY
EST. 1923

MODERN SLATE



Grey



Taupe

☒ In stock

Images are for reference only; please refer to live product for an accurate color representation.

ROBERT F. HENRY
TILE COMPANY
EST. 1923

MODERN SLATE



Noce



Charcoal

☒ In stock

Images are for reference only; please refer to live product for an accurate color representation.

ROBERT F. HENRY
TILE COMPANY
EST. 1923

BALI RED

OUTDOOR TILES

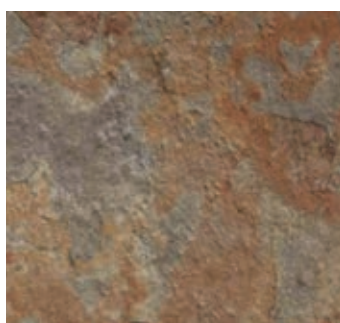
- Outdoor + Indoor • R11, Anti-Slip • 3/8" (10mm) thick • Made in Italy
- Outdoor, patios, pool decks, walkways, terraces, walls
- Indoor, floors, walls, back-splash, showers • Pattern, multi coloring



Bali Red ☒



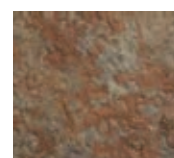
16" x 24"



16" x 16"

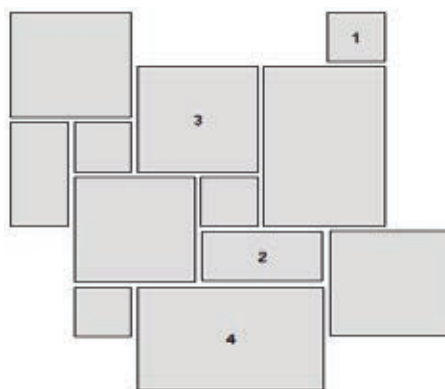


8" x 16"



8" x 8"

Installation patterns

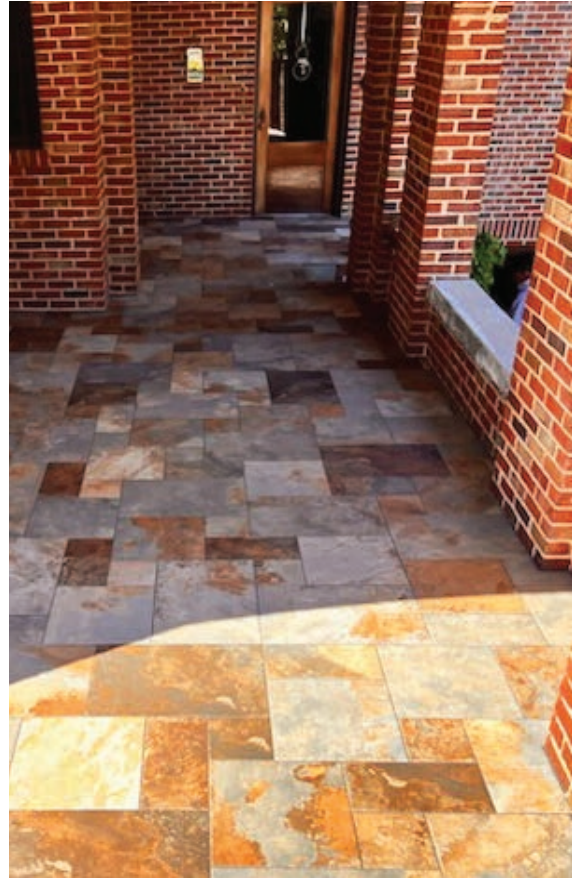


☒ In stock

Images are for reference only; please refer to live product for an accurate color representation.

ROBERT F. HENRY
TILE COMPANY
EST. 1923

BALI RED



☒ In stock

Images are for reference only; please refer to live product for an accurate color representation.

ROBERT F. HENRY
TILE COMPANY
EST. 1923

OFFROAD

OUTDOOR TILES

- 5/16" thick • Textured • Rectified, color body • Made in USA
- Outdoor walkways, patios, pool decks, walls • Residential + commercial
- Indoor floors, walls, showers, back splash

ALPS

12" x 24"

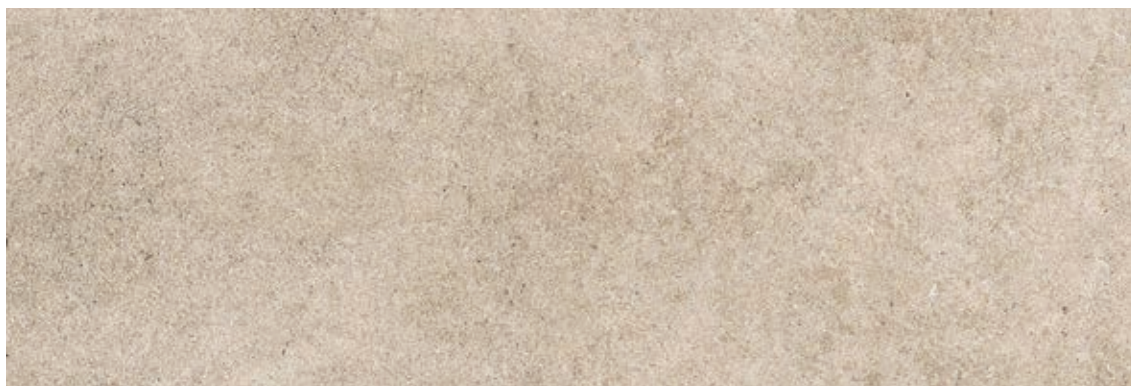
24" x 48"



MOHAVE

12" x 24"

24" x 48"



WHITE

DESSERT

12" x 24"

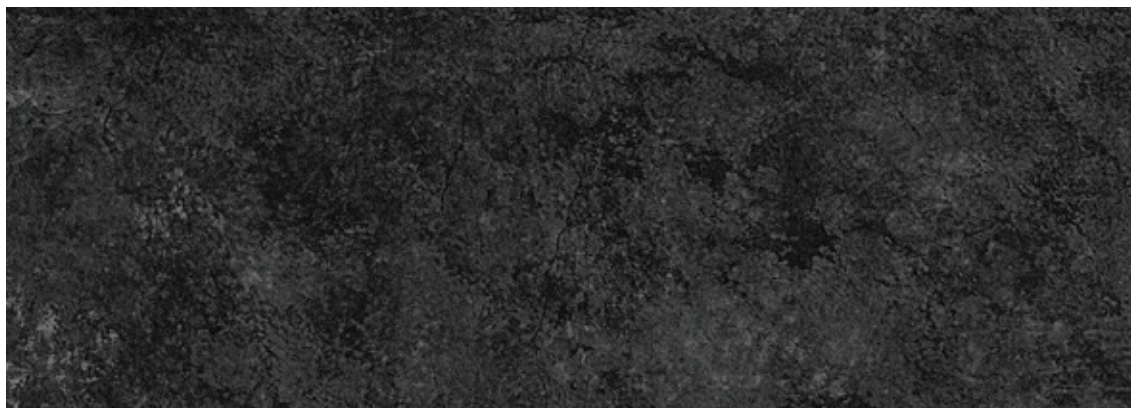
24" x 48"



KONA

12" x 24"

24" x 48"



☒ In stock

Images are for reference only; please refer to live product for an accurate color representation.

ROBERT F. HENRY
TILE COMPANY
EST. 1923

OFFROAD OUTDOOR TILES



☒ In stock

Images are for reference only; please refer to live product for an accurate color representation.

ROBERT F. HENRY
TILE COMPANY
EST. 1923

WAVE

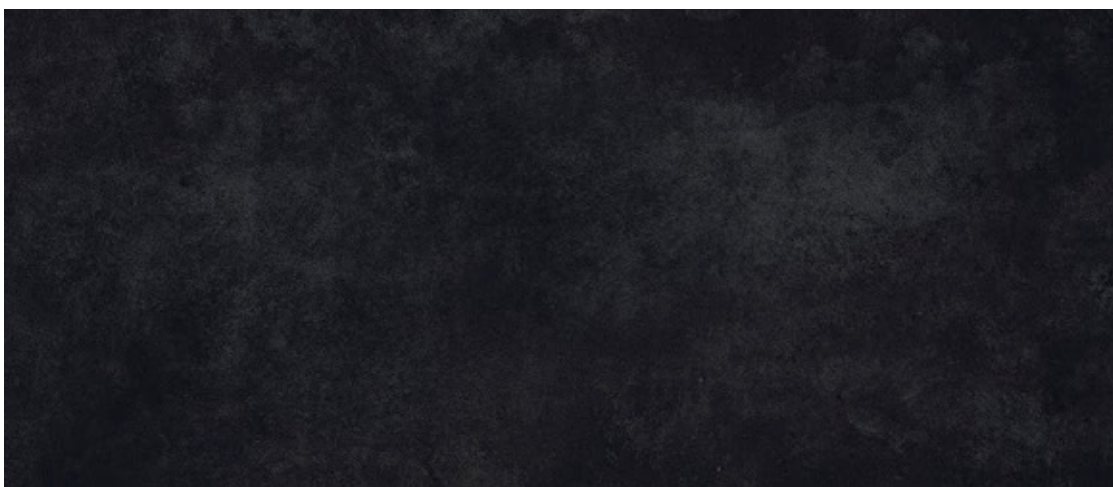
OUTDOOR TILES

- 5/16" thick • Textured • Rectified, color body • Made in USA
- Outdoor walkways, patios, pool decks, walls • Residential + commercial
- Indoor floors, walls, showers, back splash

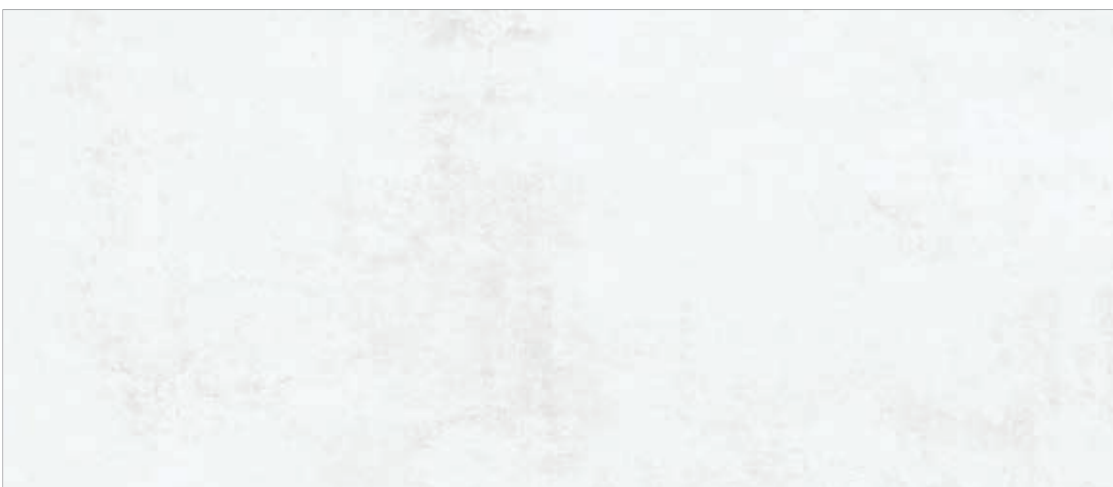
ASH
4" x 4"
12" x 24"
24" x 48"



COAL
4" x 4"
12" x 24"
24" x 48"



ICE
4" x 4"
12" x 24"
24" x 48"



☒ In stock

Images are for reference only; please refer to live product for an accurate color representation.

ROBERT E. HENRY
TILE COMPANY
EST. 1923

WAVE

OUTDOOR TILES

SAND

4" x 4"

12" x 24"

24" x 48"



SEAWEED

4" x 4"

12" x 24"

24" x 48"



☒ In stock

Images are for reference only; please refer to live product for an accurate color representation.

ROBERT E. HENRY
TILE COMPANY
EST. 1923

MOLO

OUTDOOR TILES

- Outdoor + Indoor • R11, Anti-Slip • 3/8" (10mm) thick • Made in Italy
- Outdoor, patios, pool decks, walkways, terraces, walls
- Indoor, floors, walls, back splash, showers • Pattern, multi coloring

Bitta Di Porto ☒



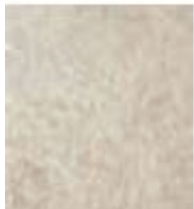
16" x 24"



16" x 16"



8" x 16"



8" x 8"

Grigio Di Scotta ☒



16" x 24"



16" x 16"

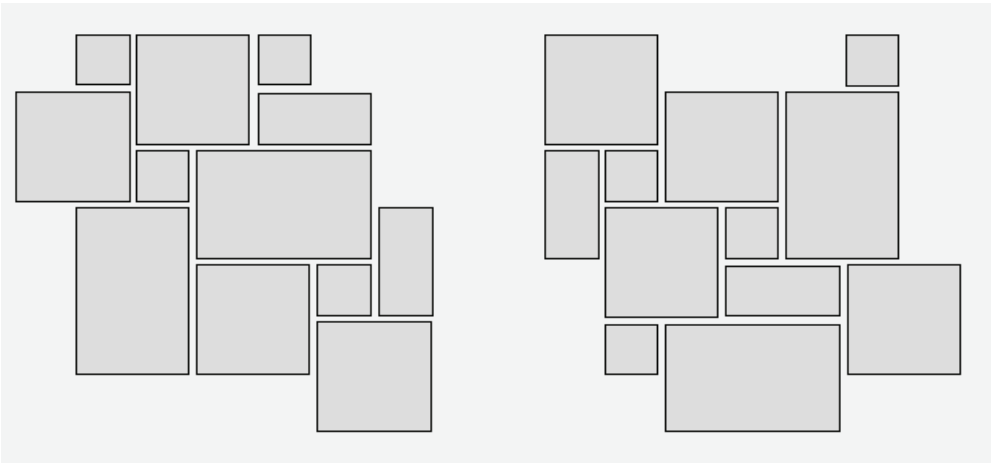


8" x 16"



8" x 8"

Installation patterns



☒ In stock

Images are for reference only; please refer to live product for an accurate color representation.

MOLO



Bitta Di Porto



☒ In stock

Images are for reference only; please refer to live product for an accurate color representation.

ROBERT F. HENRY
TILE COMPANY
EST. 1923

MOLO



Grigio Di Scotta



☒ In stock

Images are for reference only; please refer to live product for an accurate color representation.

AEXTRA

OUTDOOR PAVERS

- 3/4" thick
- Textured, non-slip
- Color body
- Made in Italy
- Residential + commercial
- Dry install on grass, gravel
- Driveways, garages, walkways, patios, pool decks



Ice



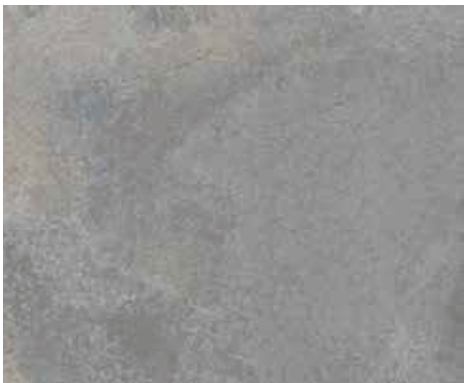
Wind



Gea



Graustein 24"x 24" ☒



Pennsylvania Blue



Pennsylvania Grey

SIZE



24"x24"



12"x24"



12"x12"

☒ In stock

Images are for reference only; please refer to live product for an accurate color representation.

ROBERT E. HENRY
TILE COMPANY
EST. 1923

AEXTRA



Ice



Gea



Wind



Graustein

☒ In stock

Images are for reference only; please refer to live product for an accurate color representation.

ROBERT F. HENRY
TILE COMPANY
EST. 1923

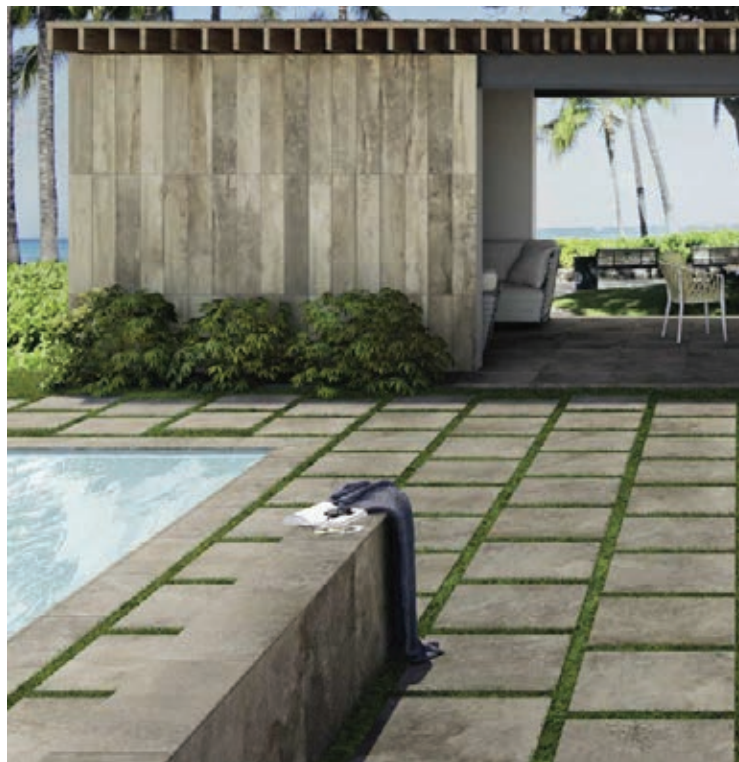
AEXTRA



Pennsylvania Grey



Pennsylvania Blue



Titanio

☒ In stock

Images are for reference only; please refer to live product for an accurate color representation.

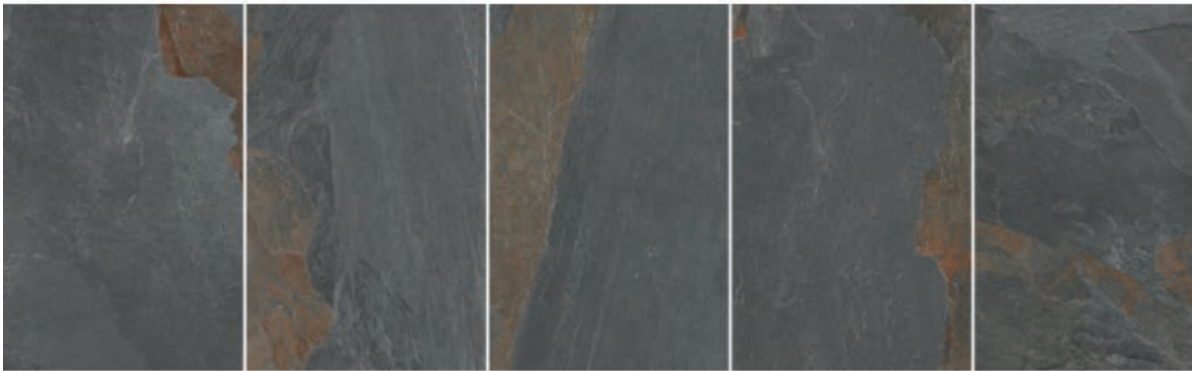
ROBERT F. HENRY
TILE COMPANY
EST. 1923

LAKE RIDGE
OUTDOOR PAVER - 24"x 36"

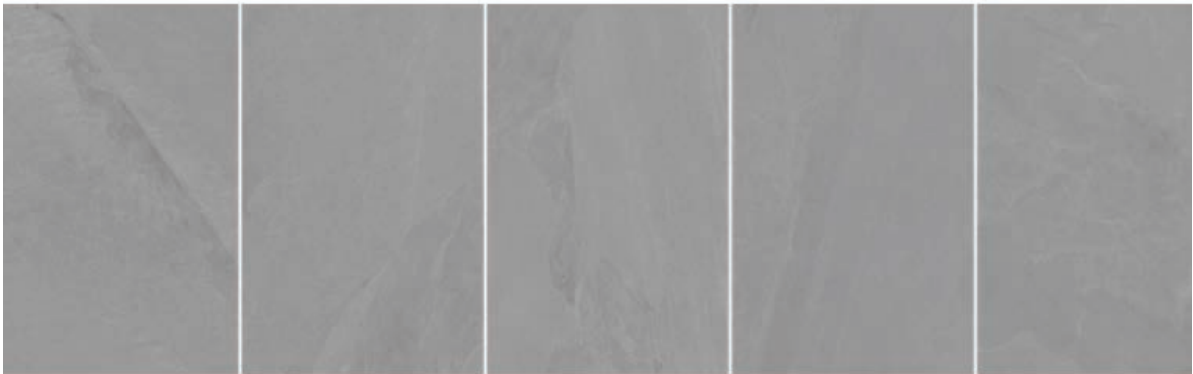
- 3/4" thick
- Textured, non-slip
- Residential + commercial
- Dry install on grass, gravel
- Ideal for any landscape
- Driveways, garages, walkways, patios, pool decks
- Made in USA

SHADE VARIATIONS

Lake Martin ☒



Guntersville Gray



Bankhead Beige



Watauga White



☒ In stock

Images are for reference only; please refer to live product for an accurate color representation.

LAKE RIDGE



Guntersville Gray



Watauga White



Bankhead Beige



Lake Martin

☒ In stock

Images are for reference only; please refer to live product for an accurate color representation.

ROBERT F. HENRY
TILE COMPANY
EST. 1923

NATURAL STONE

PENNSYLVANIA BLUESTONE

• Natural Stone • Textured, non-slip • Made in USA • Residential + commercial • Outdoor walkways, patios, pool decks, walls • Random Rectangular • Sizes range - 12"x 12" up to 24"x 36" ☒



☒ In stock

Images are for reference only; please refer to live product for an accurate color representation.

ROBERT F. HENRY
TILE COMPANY
EST. 1923

PENNSYLVANIA BLUESTONE



☒ In stock

Images are for reference only; please refer to live product for an accurate color representation.

ROBERT F. HENRY
TILE COMPANY
EST. 1923

CONCRETE TILES

ORLEANS II

- Handmade • Interior, exterior • Walls, floors
- Pools, patios, driveways • Residential + commercial
- All in-stock products • Made in USA



Artillo Hacienda Limestone 6" Hex ☒



Artillo Early Grey Limestone 6" Hex ☒



Arabesque Artillo Hacienda Limestone Pattern 12 ☒



Standard Early Grey Limestone 2"x 8" ☒



Arabesque Artillo Hacienda & Grey Mist 8C Winslet Blend ☒



Arabesque Artillo Early Grey & Charcoal 2C Magnolia Blend Limestone ☒

☒ In stock

Images are for reference only; please refer to live product for an accurate color representation.

ROBERT F. HENRY
TILE COMPANY
EST. 1923

ORLEANS II



Arabesque Artillo Early Grey Limestone 13 



Antik Crème Fraiche Limestone 2"x 8" 



Artillo Crème Fraiche Vintage 6" Hex 



Arabesque Artillo Crème Fraiche Vintage 11A 

 In stock

Images are for reference only; please refer to live product for an accurate color representation.

ORLEANS II



Arabesque Artillo Crème Fraiche Vintage 11A



Arabesque Artillo Hacienda & Grey Mist 8C Winslet Blend

☒ In stock

Images are for reference only; please refer to live product for an accurate color representation.

ROBERT F. HENRY
TILE COMPANY
EST. 1923

ORLEANS II



Antik Crème Fraiche Limestone 2"x8"



Standard Early Grey Limestone 2"x 8"

☒ In stock

Images are for reference only; please refer to live product for an accurate color representation.

ROBERT F. HENRY
TILE COMPANY
EST. 1923

ORLEANS II



Arabesque Artillo Hacienda Limestone Pattern 12



Arabesque Artillo Early Grey
& Charcoal 2C Magnolia Blend
Limestone as seen in
"Magnolia Journal" by
Chip & Joanna Gaines

☒ In stock

Images are for reference only; please refer to live product for an accurate color representation.

ROBERT F. HENRY
TILE COMPANY
EST. 1923

ORLEANS II



Artillo Early Grey Limestone 6" Hex



Artillo Hacienda Limestone 6" Hex

☒ In stock

Images are for reference only; please refer to live product for an accurate color representation.

ROBERT F. HENRY
TILE COMPANY
EST. 1923

TOWN & COUNTRY

• Salvaged veneer bricks • Handcrafted • Indoor, outdoor • Walls, floors

AMERICAN



2.5"x 8" ☒



6" Hex ☒

GREECE



2.5"x 8" ☒



6" Hex ☒

☒ In stock

Images are for reference only; please refer to live product for an accurate color representation.

TOWN & COUNTRY



☒ In stock

Images are for reference only; please refer to live product for an accurate color representation.

ROBERT F. HENRY
TILE COMPANY
EST. 1923

RECLAIMED
BRICKS

CHICAGO BRICK

- Salvaged bricks
- Handcrafted
- Indoor, outdoor
- Walls, floors



2.5"x 8.5" ☒

4"x 8.5" ☒

Corners available



☒ In stock

Images are for reference only; please refer to live product for an accurate color representation.

ROBERT F. HENRY
TILE COMPANY
EST. 1923

CHICAGO BRICK



☒ In stock

Images are for reference only; please refer to live product for an accurate color representation.

ROBERT F. HENRY
TILE COMPANY
EST. 1923

MANOR BRICK

- Salvaged bricks
- Handcrafted
- Indoor, outdoor
- Walls, floors
- In Stock



☒ In stock

Images are for reference only; please refer to live product for an accurate color representation.

ROBERT F. HENRY
TILE COMPANY
EST. 1923

PORCELAIN SLABS
FOR COUNTERS,
FLOORS, WALLS

DOLCISSIMA

- 12mm Porcelain Panels
- UV/Weather, scratch resistant
- 60" x 126" slabs
- Ideal for outdoor kitchens
- Indoor + Outdoor
- Walls, showers, back splashes, counters, floors
- Made in USA

Macchia Vecchia

NATURAL ☒
POLISHED ☒

Bookmatch
Avail



Calacatta Oro

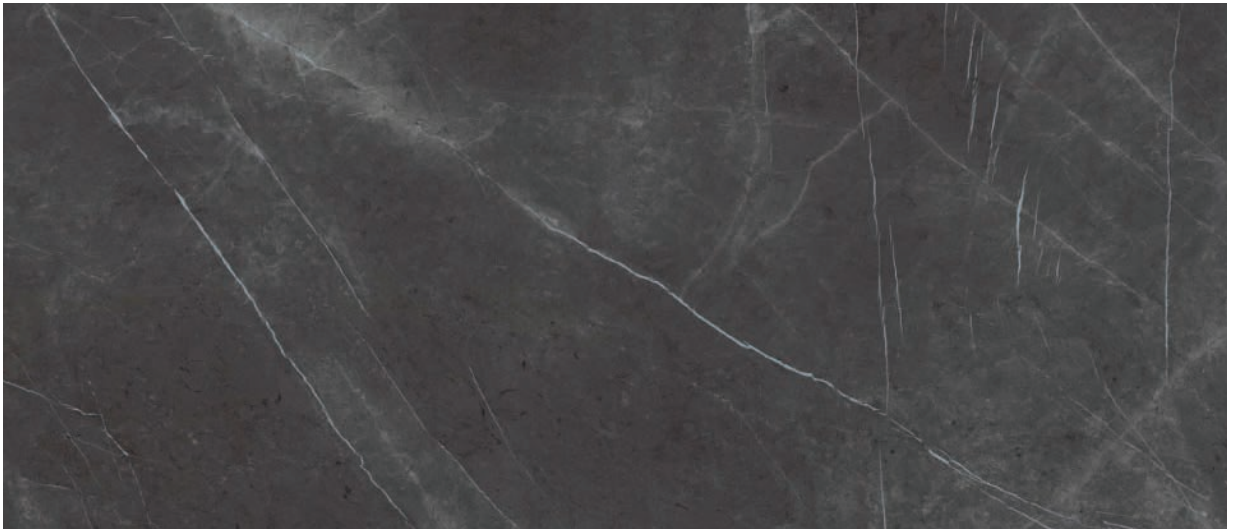
NATURAL ☒
POLISHED ☒

Bookmatch
Avail



Pietra Grey

NATURAL ☒
POLISHED ☒



☒ In stock

Images are for reference only; please refer to live product for an accurate color representation.

ROBERT F. HENRY
TILE COMPANY
EST. 1923

DOLCISSIMA

- 12mm Porcelain Panels
- UV/Weather, scratch resistant
- 60" x 126" slabs
- Ideal for outdoor kitchens
- Indoor + Outdoor
- Walls, showers, back splashes, counters, floors
- Made in USA

Calacatta White

NATURAL ☒
POLISHED ☒

*Bookmatch
Avail*



Luxe White

NATURAL ☒
POLISHED ☒



Calacatta Antique

NATURAL ☒
POLISHED ☒

*Bookmatch
Avail*



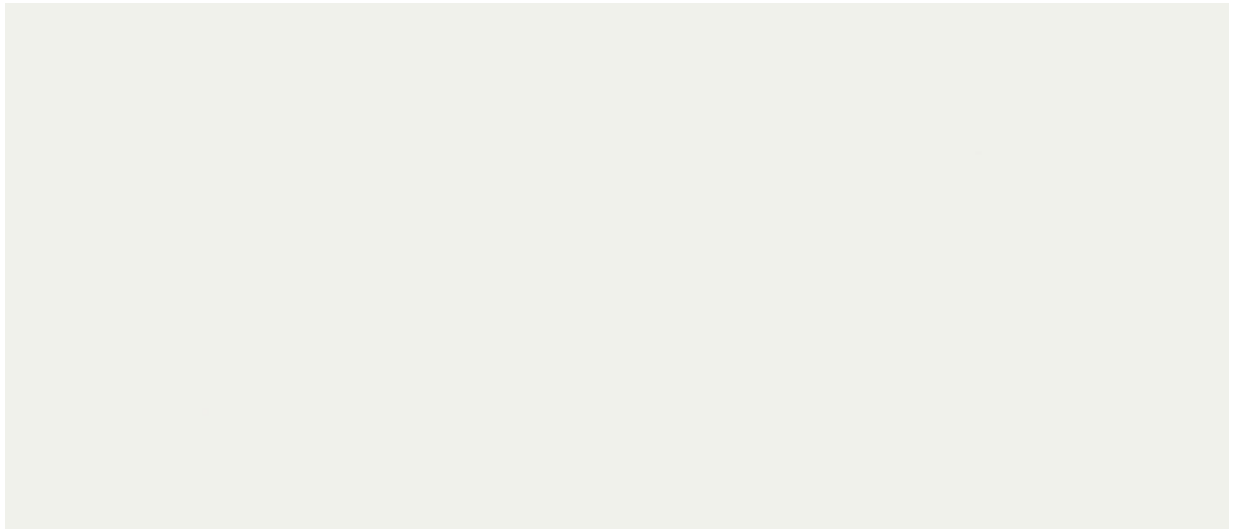
DOLCISSIMA

- 12mm Porcelain Panels • UV/Weather, scratch resistant
- 60" x 126" slabs • Ideal for outdoor kitchens • Indoor + Outdoor
- Walls, showers, back splashes, counters, floors • Made in USA

**Lasa
Argento**
POLISHED
CASHMERE
*Bookmatch
Avail*



Pure White
NATURAL
POLISHED



**Arabescato
Grey**
NATURAL
POLISHED



 **In stock**

Images are for reference only; please refer to live product for an accurate color representation.

ROBERT F. HENRY
TILE COMPANY
EST. 1933

DOLCISSIMA

- 12mm Porcelain Panels • UV/Weather, scratch resistant
- 60" x 126" slabs • Ideal for outdoor kitchens • Indoor + Outdoor
- Walls, showers, back splashes, counters, floors • Made in USA

Statuarietto
NATURAL
POLISHED



**Pietra
Bianca**
NATURAL
POLISHED
*Bookmatch
Avail*



**Grigio
Trambisera**
NATURAL
POLISHED
*Bookmatch
Avail*



☒ In stock

Images are for reference only; please refer to live product for an accurate color representation.

ROBERT F. HENRY
TILE COMPANY
EST. 1923

DOLCISSIMA

- 12mm Porcelain Panels
- UV/Weather, scratch resistant
- 60" x 126" slabs
- Ideal for outdoor kitchens
- Indoor + Outdoor
- Walls, showers, back splashes, counters, floors
- Made in USA

**Invisible
Grey**
NATURAL
POLISHED
*Bookmatch
Avail*



**Brilho
Azul**
POLISHED
SILKY
*Bookmatch
Avail*



Beleza
POLISHED
SILKY
*Bookmatch
Avail*



☒ In stock

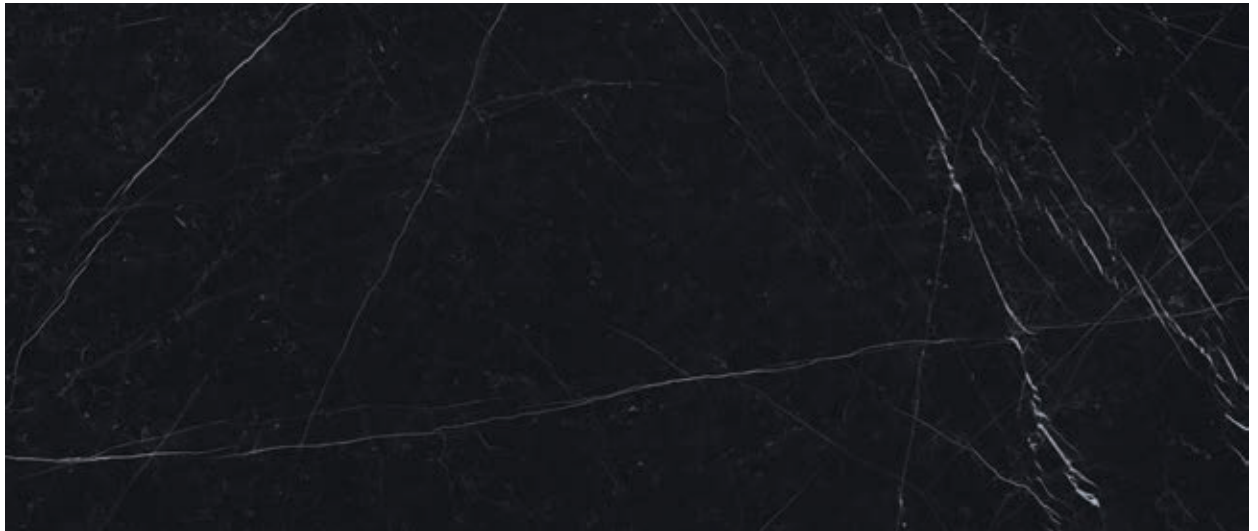
Images are for reference only; please refer to live product for an accurate color representation.

ROBERT F. HENRY
TILE COMPANY
EST. 1923

DOLCISSIMA

- 12mm Porcelain Panels • UV/Weather, scratch resistant
- 60" x 126" slabs • Ideal for outdoor kitchens • Indoor + Outdoor
- Walls, showers, back splashes, counters, floors • Made in USA

**Nero
Marquinia**
NATURAL
POLISHED



**Grey
Basalt**
NATURAL



**Creamy
Basalt**
NATURAL



☒ In stock

Images are for reference only; please refer to live product for an accurate color representation.

ROBERT F. HENRY
TILE COMPANY
EST. 1923

DOLCISSIMA

- 12mm Porcelain Panels • UV/Weather, scratch resistant
- 60" x 126" slabs • Ideal for outdoor kitchens • Indoor + Outdoor
- Walls, showers, back splashes, counters, floors • Made in USA

**Sand
Basalt**
NATURAL



**Savoie
Blue**
NATURAL
*Bookmatch
Avail*



**Cementi
Grey**
NATURAL



☒ In stock

Images are for reference only; please refer to live product for an accurate color representation.

ROBERT F. HENRY
TILE COMPANY
EST. 1923

DOLCISSIMA

- 12mm Porcelain Panels • UV/Weather, scratch resistant
- 60" x 126" slabs • Ideal for outdoor kitchens • Indoor + Outdoor
- Walls, showers, back splashes, counters, floors • Made in USA

Taj Mahal
POLISHED



**Platinum
Grey**
POLISHED
*Bookmatch
Avail*



**Cementi
Grey**
NATURAL



☒ In stock

Images are for reference only; please refer to live product for an accurate color representation.

DOLCISSIMA

Macchia
Vecchia



Calacatta
White



Pietra Grey



☒ In stock

Images are for reference only; please refer to live product for an accurate color representation.

DOLCISSIMA

Pietra
Grey &
Calacatta
Oro



Calacatta
Antico



☒ In stock

Images are for reference only; please refer to live product for an accurate color representation.

ROBERT F. HENRY
TILE COMPANY
EST. 1923

DOLCISSIMA

Statuarietto



Grigio
Trambisera



Arabescato
Grey



☒ In stock

Images are for reference only; please refer to live product for an accurate color representation.

ROBERT F. HENRY
TILE COMPANY
EST. 1923



America's premier induction cook range that creates a countertop that you can cook directly on two to five burners. Easily operate through control pad or on through the app. Create a seamless cooking surface that is only warm to the touch. Beautiful surfaces that are fun to cook on and can be a safer cooking surface than electric and gas.



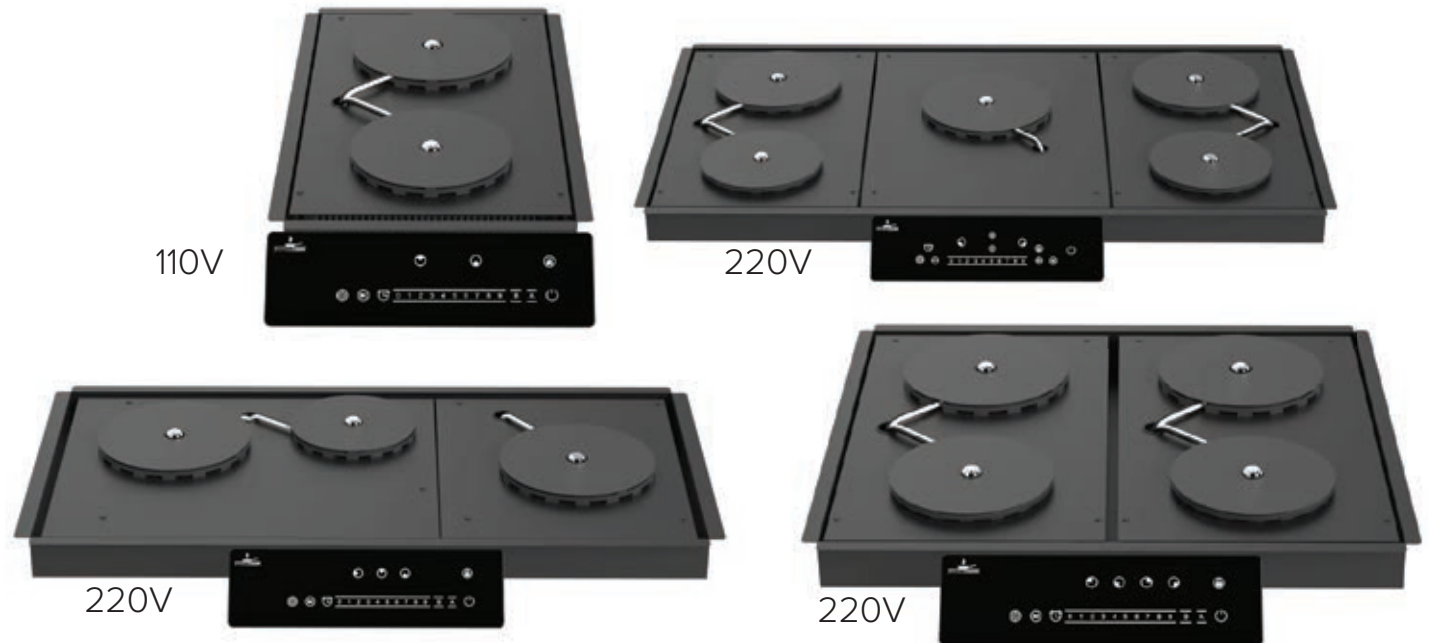
Scan to watch
Invisacook video

ROBERT F. HENRY TILE IS AN AUTHORIZED INVISACOOK® DEALER.





Cooktops: 2, 3,
4 or 5 Burner



5-Piece Invisacookware®

5-Ply Stainless Steel with Copper
Core, for ultimate performance.



InvisaMat

Anti-slip cooking mat



ROBERT F. HENRY TILE IS AN AUTHORIZED INVISACOOK® DEALER.

ROBERT F. HENRY
TILE COMPANY
EST. 1923

ROBERT F. HENRY

TILE COMPANY

EST. 1933

Inspiring Homeowners for Generations

HENRYTILE.COM



MONTGOMERY 334 269 2518

BIRMINGHAM 205 592 8615

TUSCALOOSA 205 556 1900

HUNTSVILLE 256 837 0500

NASHVILLE 615-712-9439

BATON ROUGE 225-224-7995

MEMPHIS 901-387-4525

PENSACOLA 850-469-9626