



# OUTDOOR LIVING

ROBERT F. HENRY

TILE COMPANY

EST. 1933

*Inspiring Homeowners for Generations*





Expanding your living area outdoors  
is like adding a room to your  
home without the full cost of indoor  
construction. Outdoor kitchens  
and living spaces create an amazing  
space to host family and friends,  
Outdoor living areas are also  
highly desirable in the real estate  
market, potentially increasing  
the resale value of homes.



OUTDOOR LIVING  
DIGITAL CATALOG

PLEASE REFER TO A SALES REP AND PRODUCT FOR THE MOST UP-TO-DATE INFO

COVER: LAKE RIDGE 2CM PAVER, LAKE MARTIN

Porcelain anti-slip outdoor pavers offer a durable, low-maintenance solution, improve safety and aesthetics. They resist wear from extreme weather, and their anti-slip surface ensures secure footing in wet conditions, making them ideal for patios, walkways, and pool areas.

Natural stone is an excellent choice due to its durability, slip resistance, and timeless beauty. Popular options include slate for its rich texture and natural variation, and limestone for its elegant look and heat resistance.

Concrete tiles are strong and cost-effective, perfect for heavy-traffic areas. They can be molded into various shapes and colors, offering design flexibility, and are a sustainable, recyclable option.

Reclaimed bricks are eco-friendly being salvaged from old buildings, and they add character and sustainability to a project. No two reclaimed bricks are the same, offering a weathered, rustic appearance.

Porcelain slabs for outdoor countertops are durable, elegant, weather-resistant, and low-maintenance making them ideal for all climates. They resist stains, scratches, and UV rays and offer a sleek, modern aesthetic with easy cleaning. Porcelain countertops pair perfectly with InvisiCook to create the perfect indoor and or outdoor kitchen.

OUTDOOR PORCELAIN  
TILES + PAVERS

NATURAL STONE

CONCRETE TILES

RECLAIMED BRICKS

PORCELAIN SLABS  
FOR COUNTERTOPS

INVISACOOK

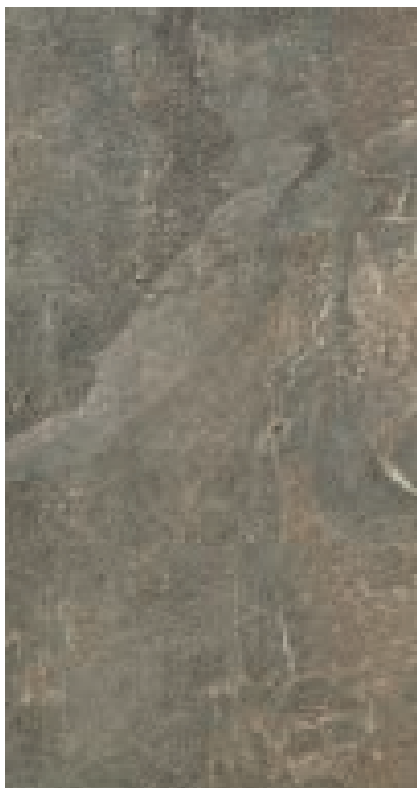
# PORCELAIN TILES + PAVERS



# MODERN SLATE

## OUTDOOR TILES - 12" X 24"

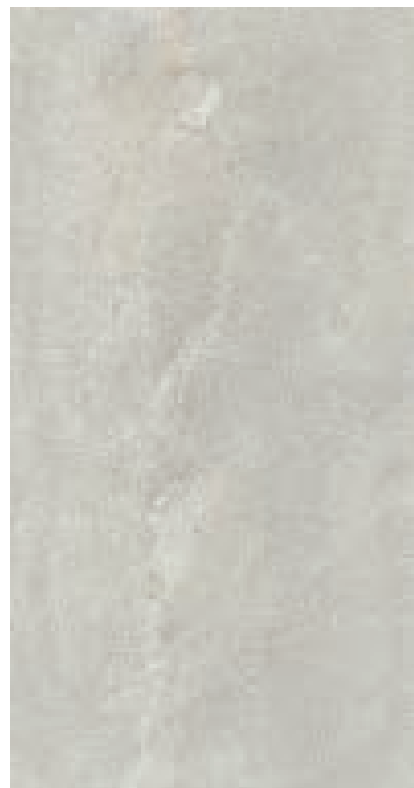
- Outdoor + Indoor • R11, Anti-Slip • 5/16" thick
- Outdoor, patios, pool decks, walkways, terraces, walls
- Floors, walls, showers • Residential + commercial
- Made in USA



Taupe ☒



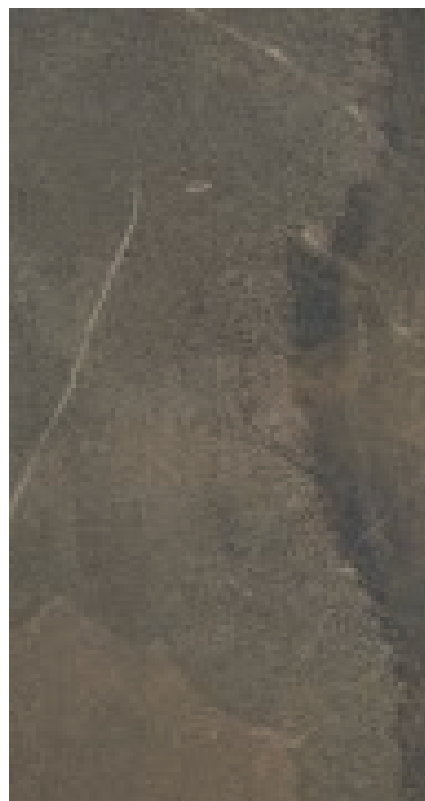
Grey ☒



Ivory ☒



Charcoal ☒



Noce ☒

☒ In stock

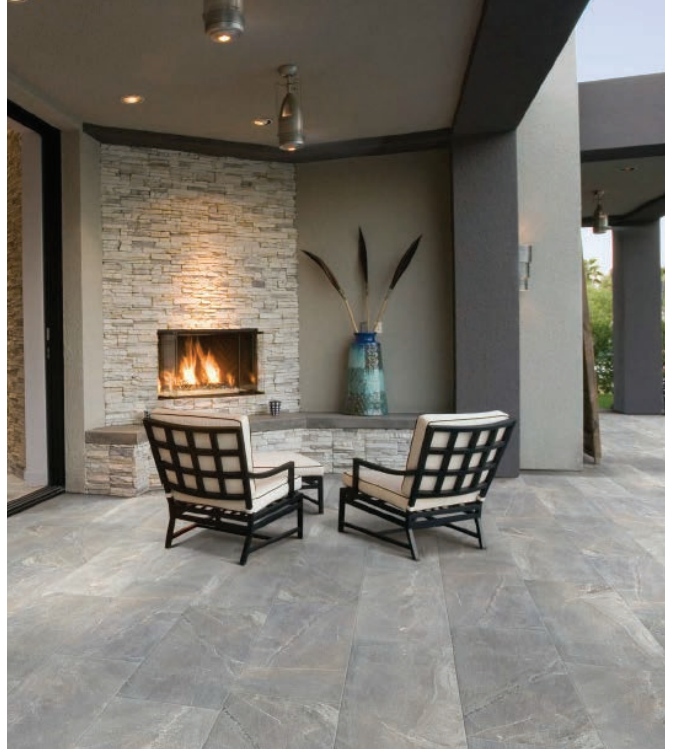
Images are for reference only; please refer to live product for an accurate color representation.

**ROBERT F. HENRY**  
TILE COMPANY  
EST. 1923

# MODERN SLATE



Grey



Taupe

☒ In stock

Images are for reference only; please refer to live product for an accurate color representation.

**ROBERT F. HENRY**  
TILE COMPANY  
EST. 1923



# MODERN SLATE



Noce



Charcoal

☒ In stock

Images are for reference only; please refer to live product for an accurate color representation.



# BALI RED

## OUTDOOR TILES

- Outdoor + Indoor • R11, Anti-Slip • 3/8" (10mm) thick • Made in Italy
- Outdoor, patios, pool decks, walkways, terraces, walls
- Indoor, floors, walls, back-splash, showers • Pattern, multi coloring



Bali Red ☒



16" x 24"



16" x 16"

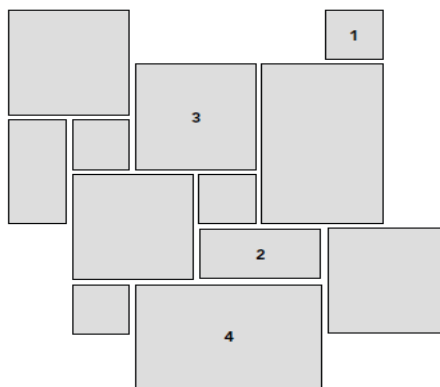
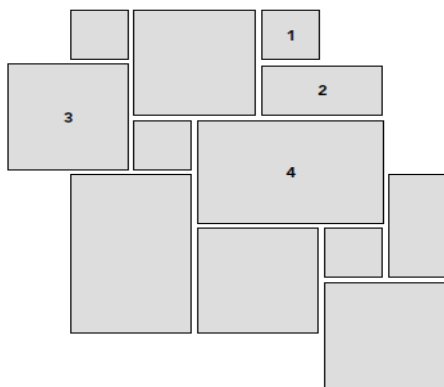


8" x 16"



8" x 8"

Installation patterns



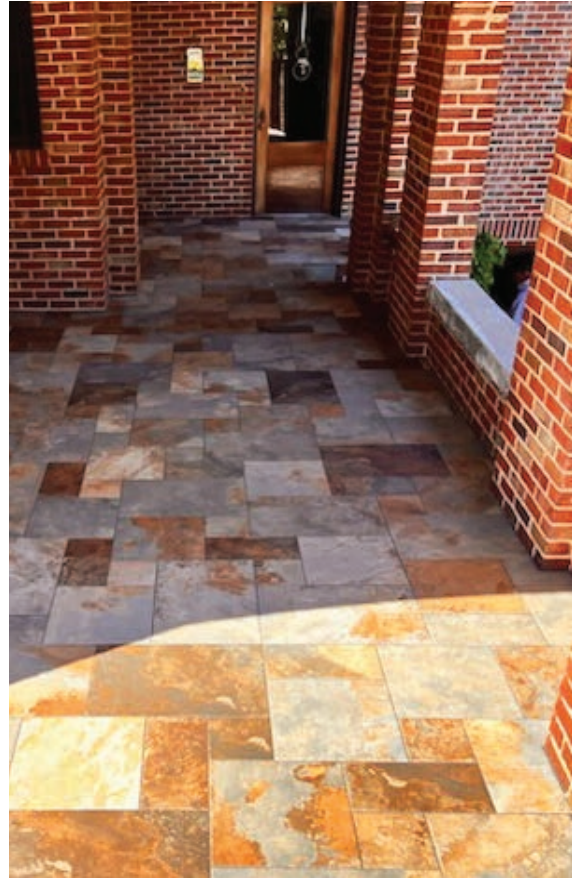
☒ In stock

Images are for reference only; please refer to live product for an accurate color representation.

**ROBERT F. HENRY**  
TILE COMPANY  
EST. 1923



# BALI RED



☒ In stock

Images are for reference only; please refer to live product for an accurate color representation.

**ROBERT F. HENRY**  
TILE COMPANY  
EST. 1923



# OFFROAD

## OUTDOOR TILES

- 5/16" thick • Textured • Rectified, color body • Made in USA
- Outdoor walkways, patios, pool decks, walls • Residential + commercial
- Indoor floors, walls, showers, back splash

ALPS

12" x 24"

24" x 48"



MOHAVE

12" x 24"

24" x 48"



WHITE

DESSERT

12" x 24"

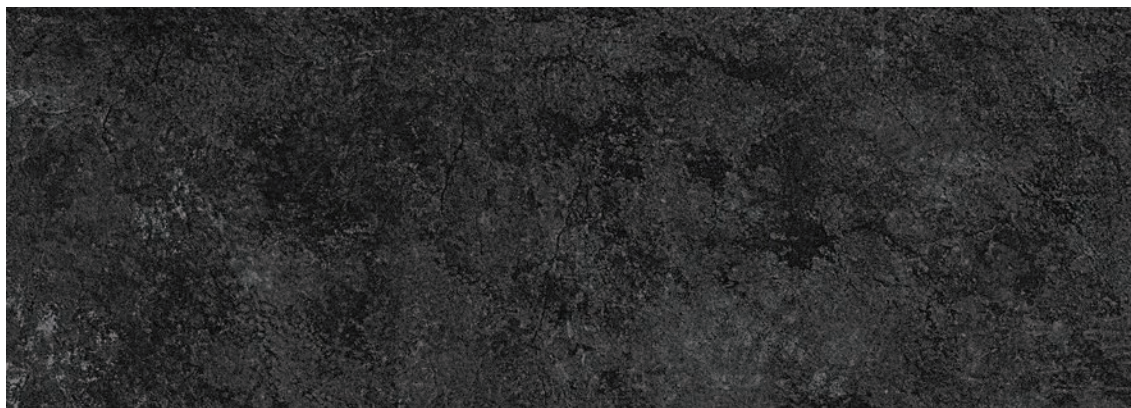
24" x 48"



KONA

12" x 24"

24" x 48"



☒ In stock

Images are for reference only; please refer to live product for an accurate color representation.

**ROBERT F. HENRY**  
TILE COMPANY  
EST. 1923



## OFFROAD OUTDOOR TILES



☒ In stock

Images are for reference only; please refer to live product for an accurate color representation.

**ROBERT F. HENRY**  
TILE COMPANY  
EST. 1923



# WAVE

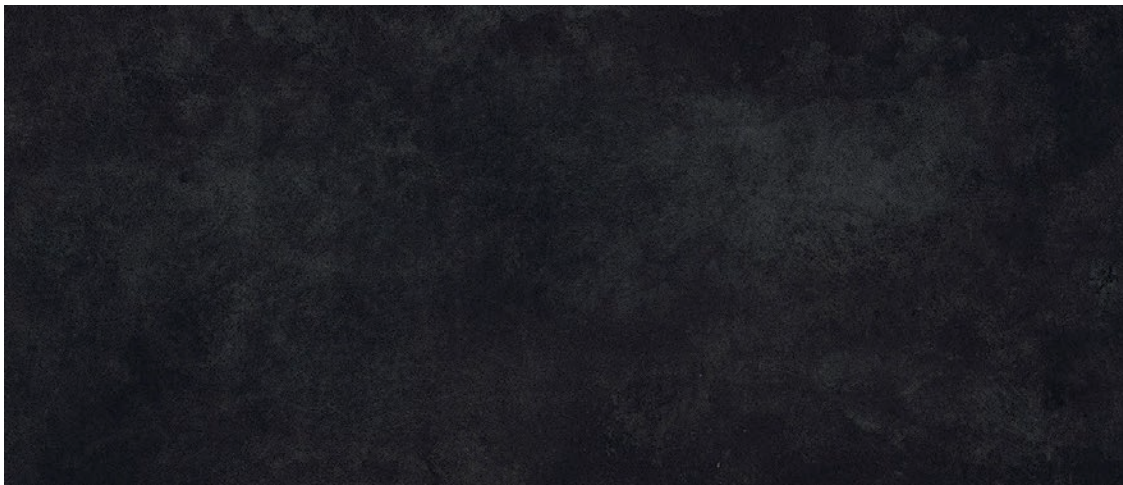
## OUTDOOR TILES

- 5/16" thick • Textured • Rectified, color body • Made in USA
- Outdoor walkways, patios, pool decks, walls • Residential + commercial
- Indoor floors, walls, showers, back splash

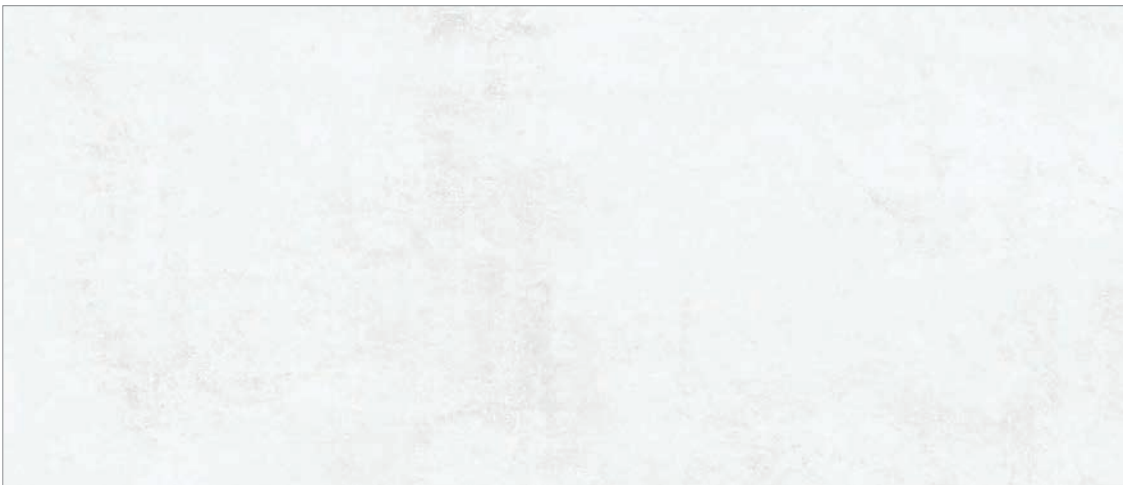
ASH  
4" x 4"  
12" x 24"  
24" x 48"



COAL  
4" x 4"  
12" x 24"  
24" x 48"



ICE  
4" x 4"  
12" x 24"  
24" x 48"



☒ In stock

Images are for reference only; please refer to live product for an accurate color representation.

**ROBERT F. HENRY**  
TILE COMPANY  
EST. 1923

# WAVE

## OUTDOOR TILES

SAND

4" x 4"

12" x 24"

24" x 48"



SEAWEED

4" x 4"

12" x 24"

24" x 48"



☒ In stock

Images are for reference only; please refer to live product for an accurate color representation.

**ROBERT F. HENRY**  
TILE COMPANY  
EST. 1923

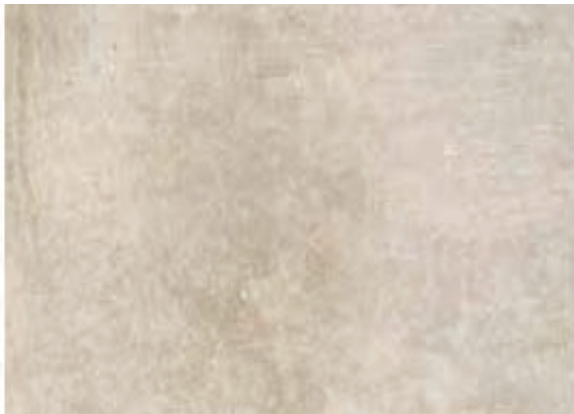


# MOLO

## OUTDOOR TILES

- Outdoor + Indoor • R11, Anti-Slip • 3/8" (10mm) thick • Made in Italy
- Outdoor, patios, pool decks, walkways, terraces, walls
- Indoor, floors, walls, back splash, showers • Pattern, multi coloring

Bitta Di Porto ☒



16" x 24"



16" x 16"



8" x 16"

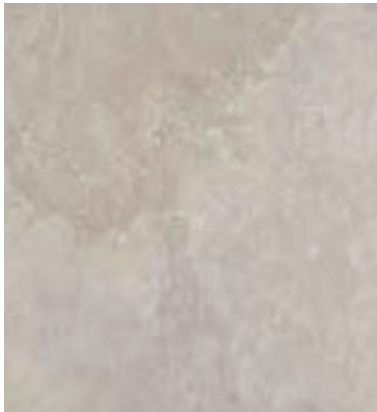


8" x 8"

Grigio Di Scotta ☒



16" x 24"



16" x 16"

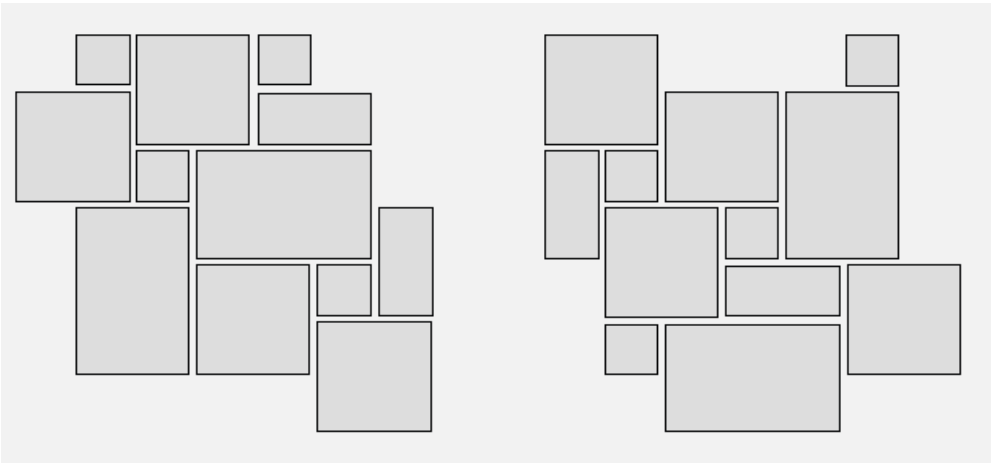


8" x 16"



8" x 8"

Installation patterns



☒ In stock

Images are for reference only; please refer to live product for an accurate color representation.

# MOLO



Bitta Di Porto



☒ In stock

Images are for reference only; please refer to live product for an accurate color representation.

**ROBERT F. HENRY**  
TILE COMPANY  
EST. 1923



MOLO



Grigio Di Scotta



☒ In stock

Images are for reference only; please refer to live product for an accurate color representation.



# AEXTRA

## OUTDOOR PAVERS

- 3/4" thick
- Textured, non-slip
- Color body
- Made in Italy
- Residential + commercial
- Dry install on grass, gravel
- Driveways, garages, walkways, patios, pool decks



Ice



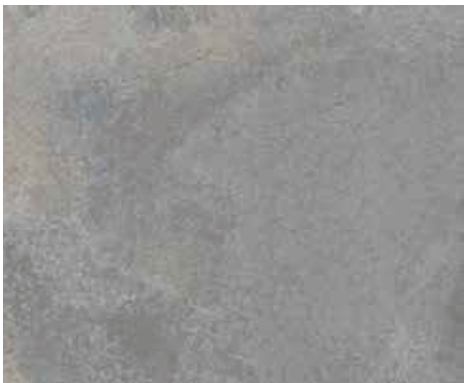
Wind



Gea



Graustein 24"x 24" ☒



Pennsylvania Blue



Pennsylvania Grey

SIZE



24"x24"



12"x24"



12"x12"

☒ In stock

Images are for reference only; please refer to live product for an accurate color representation.

**ROBERT F. HENRY**  
TILE COMPANY  
EST. 1923



# AEXTRA



Ice



Gea



Wind



Graustein

☒ In stock

Images are for reference only; please refer to live product for an accurate color representation.

**ROBERT F. HENRY**  
TILE COMPANY  
EST. 1923



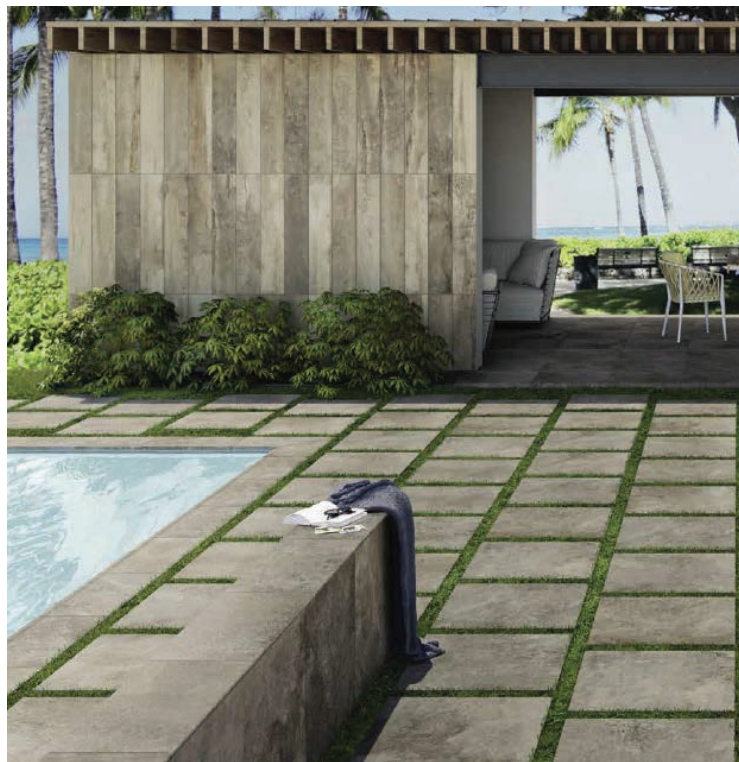
# AEXTRA



Pennsylvania Grey



Pennsylvania Blue



Titanio

☒ In stock

Images are for reference only; please refer to live product for an accurate color representation.

**ROBERT F. HENRY**  
TILE COMPANY  
EST. 1923

LAKE RIDGE

OUTDOOR PAVER - 24"x 36"

- 3/4" thick
- Textured, non-slip
- Residential + commercial
- Dry install on grass, gravel
- Ideal for any landscape
- Driveways, garages, walkways, patios, pool decks
- Made in USA

|   | SHADE VARIATIONS   |  |  |  |  |
|---|--|--|--|--|--|
| Lake Martin <input checked="" type="checkbox"/> |    |  |  |  |  |
| Guntersville Gray                               |   |  |  |  |  |
| Bankhead Beige                                  |  |  |  |  |  |
| Watauga White                                   |  |  |  |  |  |



# LAKE RIDGE



Guntersville Gray



Watauga White



Bankhead Beige



Lake Martin

☒ In stock

Images are for reference only; please refer to live product for an accurate color representation.

**ROBERT F. HENRY**  
TILE COMPANY  
EST. 1923

NATURAL STONE



# PENNSYLVANIA BLUESTONE

• Natural Stone • Textured, non-slip • Made in USA • Residential + commercial • Outdoor walkways, patios, pool decks, walls • Random Rectangular • Sizes range - 12"x 12" up to 24"x 36" ☒



☒ In stock

Images are for reference only; please refer to live product for an accurate color representation.

**ROBERT F. HENRY**  
TILE COMPANY  
EST. 1923



# PENNSYLVANIA BLUESTONE



☒ In stock

Images are for reference only; please refer to live product for an accurate color representation.

**ROBERT F. HENRY**  
TILE COMPANY  
EST. 1923



CONCRETE TILES

# ORLEANS II

- Handmade • Interior, exterior • Walls, floors
- Pools, patios, driveways • Residential + commercial
- All in-stock products • Made in USA



Artillo Hacienda Limestone 6" Hex ☒



Artillo Early Grey Limestone 6" Hex ☒



Arabesque Artillo Hacienda Limestone Pattern 12 ☒



Standard Early Grey Limestone 2"x 8" ☒



Arabesque Artillo Hacienda & Grey Mist 8C Winslet Blend ☒



Arabesque Artillo Early Grey & Charcoal 2C Magnolia Blend Limestone ☒

☒ In stock

Images are for reference only; please refer to live product for an accurate color representation.

**ROBERT F. HENRY**  
TILE COMPANY  
EST. 1923



# ORLEANS II



Arabesque Artillo Early Grey Limestone 13 




Antik Crème Fraiche Limestone 2"x 8" 



Artillo Crème Fraiche Vintage 6" Hex 



Arabesque Artillo Crème Fraiche Vintage 11A 

 In stock

Images are for reference only; please refer to live product for an accurate color representation.

# ORLEANS II



Arabesque Artillo Crème Fraiche Vintage 11A



Arabesque Artillo Hacienda & Grey Mist 8C Winslet Blend

☒ In stock

Images are for reference only; please refer to live product for an accurate color representation.

**ROBERT F. HENRY**  
TILE COMPANY  
EST. 1923



# ORLEANS II



Antik Crème Fraiche Limestone 2"x8"



Standard Early Grey Limestone 2"x 8"

☒ In stock

Images are for reference only; please refer to live product for an accurate color representation.

**ROBERT F. HENRY**  
TILE COMPANY  
EST. 1923



# ORLEANS II



Arabesque Artillo Hacienda Limestone Pattern 12



Arabesque Artillo Early Grey  
& Charcoal 2C Magnolia Blend  
Limestone as seen in  
"Magnolia Journal" by  
Chip & Joanna Gaines

☒ In stock

Images are for reference only; please refer to live product for an accurate color representation.

**ROBERT F. HENRY**  
TILE COMPANY  
EST. 1923



# ORLEANS II



Artillo Early Grey Limestone 6" Hex



Artillo Hacienda Limestone 6" Hex

☒ In stock

Images are for reference only; please refer to live product for an accurate color representation.

**ROBERT F. HENRY**  
TILE COMPANY  
EST. 1923



# TOWN & COUNTRY

• Salvaged veneer bricks • Handcrafted • Indoor, outdoor • Walls, floors

## AMERICAN



2.5"x 8" ☒



6" Hex ☒

## GREECE



2.5"x 8" ☒



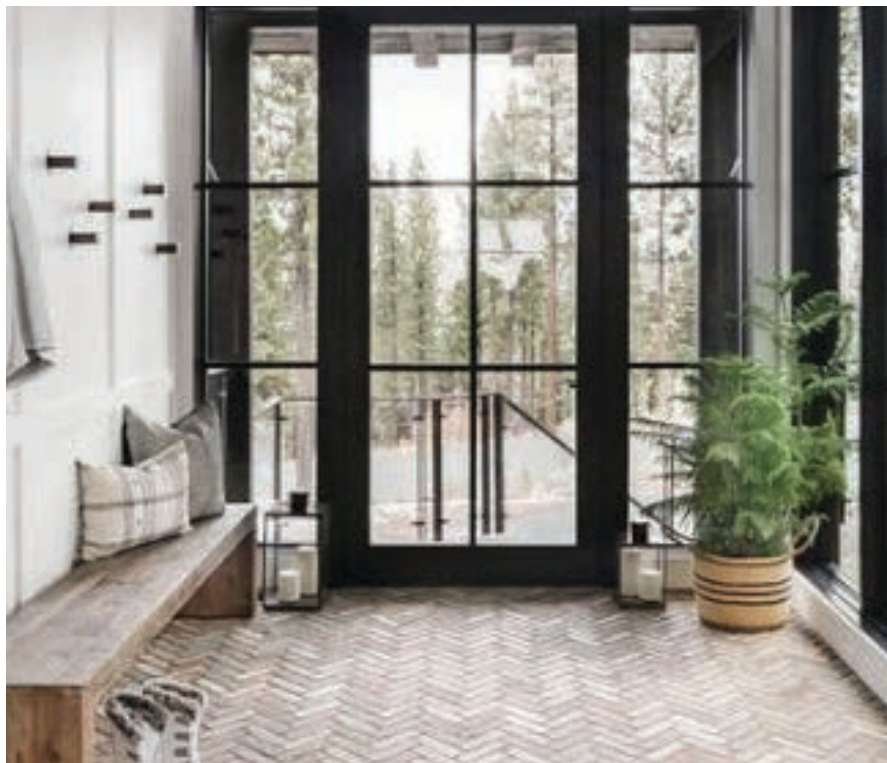
6" Hex ☒

☒ In stock

Images are for reference only; please refer to live product for an accurate color representation.



# TOWN & COUNTRY



☒ In stock

Images are for reference only; please refer to live product for an accurate color representation.

**ROBERT F. HENRY**  
TILE COMPANY  
EST. 1923

# RECLAIMED BRICKS



# CHICAGO BRICK

- Salvaged bricks
- Handcrafted
- Indoor, outdoor
- Walls, floors



2.5"x 8.5" ☒

4"x 8.5" ☒

Corners available



☒ In stock

Images are for reference only; please refer to live product for an accurate color representation.

**ROBERT F. HENRY**  
TILE COMPANY  
EST. 1923



# CHICAGO BRICK



☒ In stock

Images are for reference only; please refer to live product for an accurate color representation.

**ROBERT F. HENRY**  
TILE COMPANY  
EST. 1923



# MANOR BRICK

- Salvaged bricks
- Handcrafted
- Indoor, outdoor
- Walls, floors
- In Stock



☒ In stock

Images are for reference only; please refer to live product for an accurate color representation.

**ROBERT F. HENRY**  
TILE COMPANY  
EST. 1923

PORCELAIN SLABS  
FOR COUNTERS,  
FLOORS, WALLS



# DOLCISSIMA

- 12mm • UV/Weather, scratch resistant • Easy to maintain
- Ideal for outdoor kitchens • Made in USA • 60" x 126" slabs
- Indoor + Outdoor • Walls, showers, back splashes, counters

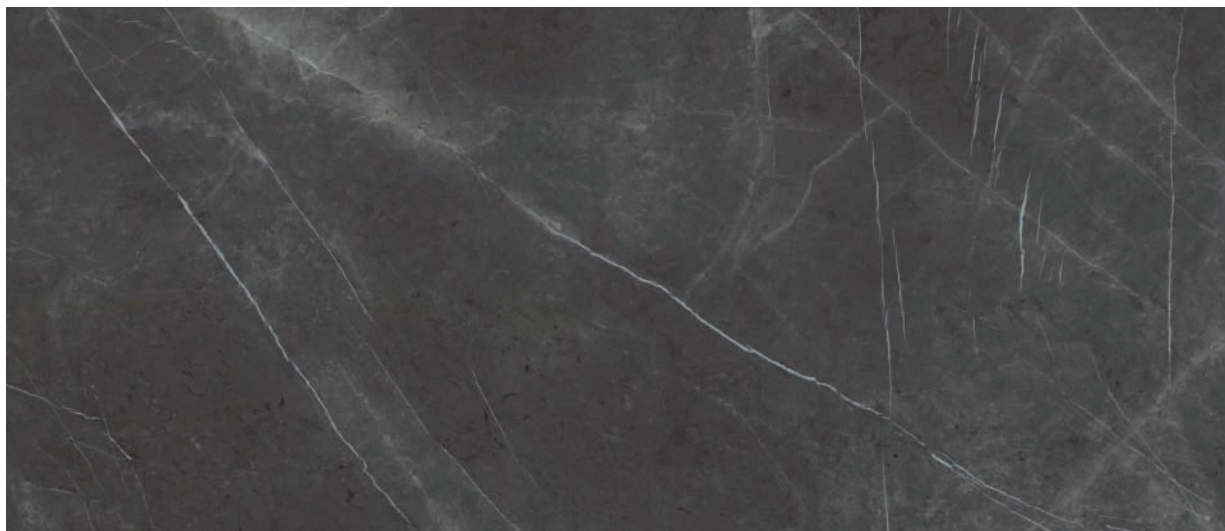
Macchia  
Vecchia  
**MATTE** ☒  
**POLISHED** ☒



Calacatta  
Oro  
**MATTE** ☒  
**POLISHED** ☒



Pietra Grey  
**MATTE** ☒  
**POLISHED** ☒



☒ In stock

Images are for reference only; please refer to live product for an accurate color representation.

**ROBERT F. HENRY**  
**TILE COMPANY**  
EST. 1923

# DOLCISSIMA

Calacatta  
White

MATTE ☒  
POLISHED ☒



Luxe White

MATTE ☒  
POLISHED ☒



Calacatta  
Antique

MATTE ☒  
POLISHED ☒



☒ In stock

Images are for reference only; please refer to live product for an accurate color representation.

**ROBERT F. HENRY**  
TILE COMPANY  
EST. 1923



# DOLCISSIMA

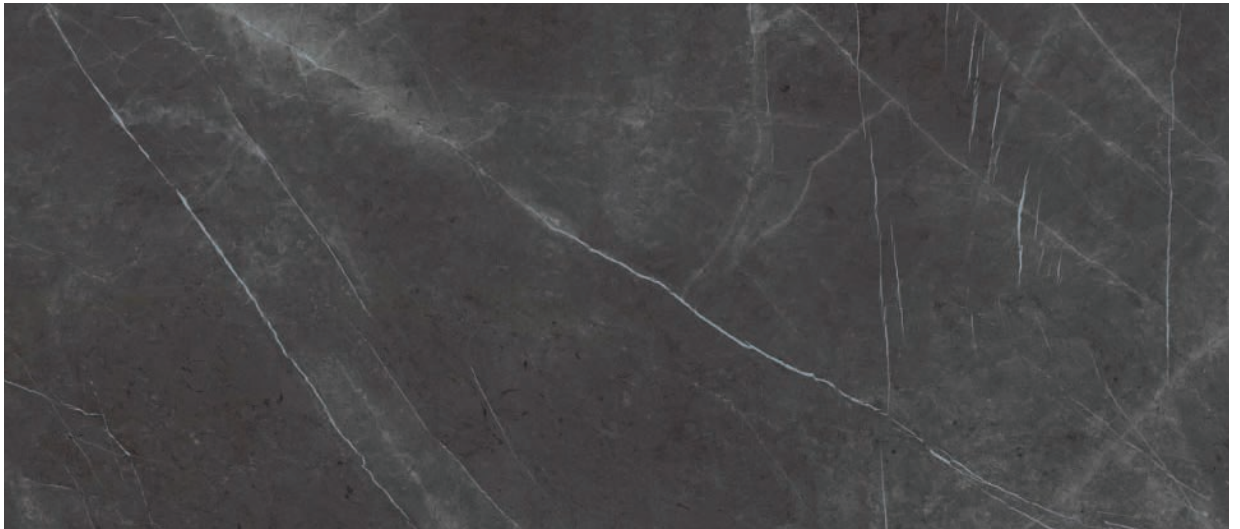
Macchia  
Vecchia  
MATTE ☒  
POLISHED ☒



Calacatta  
Oro  
MATTE ☒  
POLISHED ☒



Pietra Grey  
MATTE ☒  
POLISHED ☒



☒ In stock

Images are for reference only; please refer to live product for an accurate color representation.

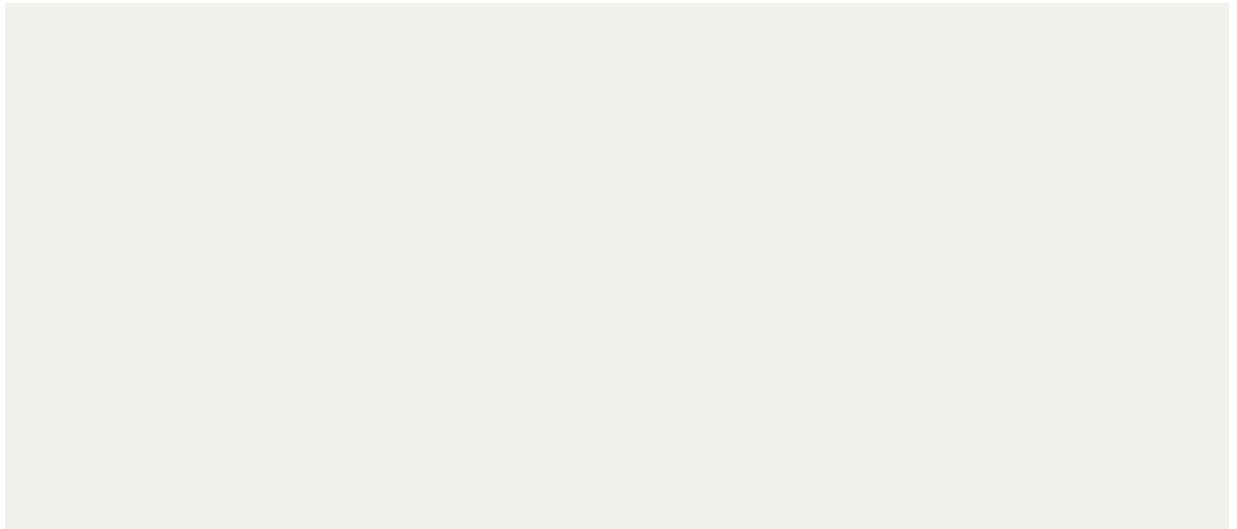
**ROBERT F. HENRY**  
TILE COMPANY  
EST. 1933

# DOLCISSIMA

Lasa  
Argento  
**POLISHED**  
**SILKY**



Pure White  
**MATTE**  
**POLISHED**



Arabescato  
Grey  
**MATTE**  
**POLISHED**



☒ In stock

Images are for reference only; please refer to live product for an accurate color representation.

**ROBERT F. HENRY**  
**TILE COMPANY**  
EST. 1923



# DOLCISSIMA

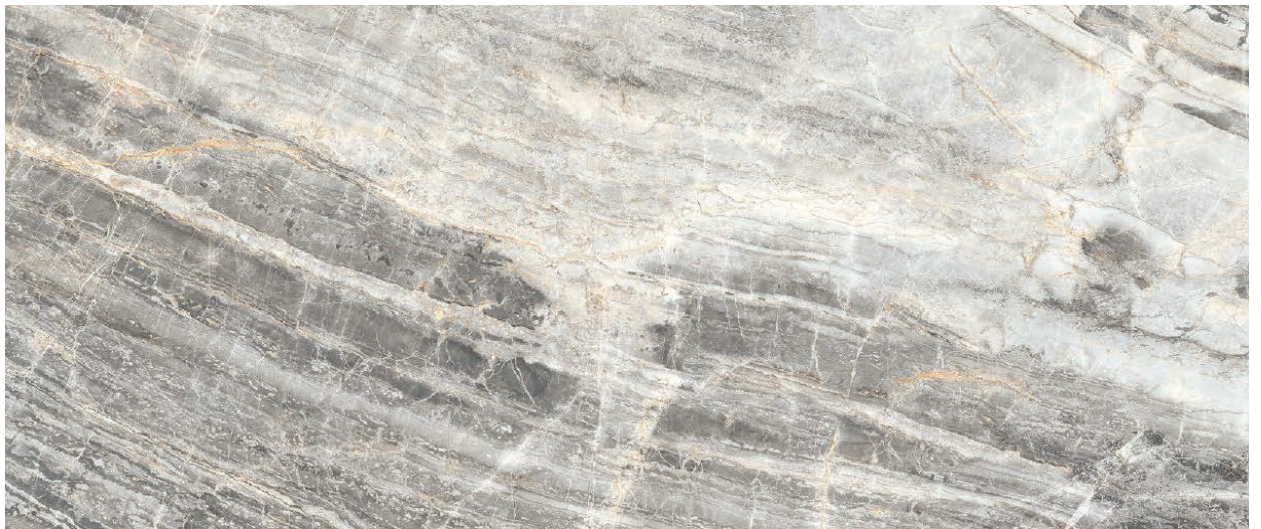
Statuarietto  
**MATTE**  
**POLISHED**



Pietra  
Bianca  
**MATTE**  
**POLISHED**



Grigio  
Trambisera  
**MATTE +**  
**POLISHED**



☒ In stock

Images are for reference only; please refer to live product for an accurate color representation.

**ROBERT F. HENRY**  
**TILE COMPANY**  
EST. 1923

# DOLCISSIMA

Pietra  
Scura  
**MATTE**



Invisible Grey  
**MATTE +  
POLISHED**



Savoie Blue  
**MATTE**



☒ In stock

Images are for reference only; please refer to live product for an accurate color representation.

**ROBERT F. HENRY**  
**TILE COMPANY**  
EST. 1923

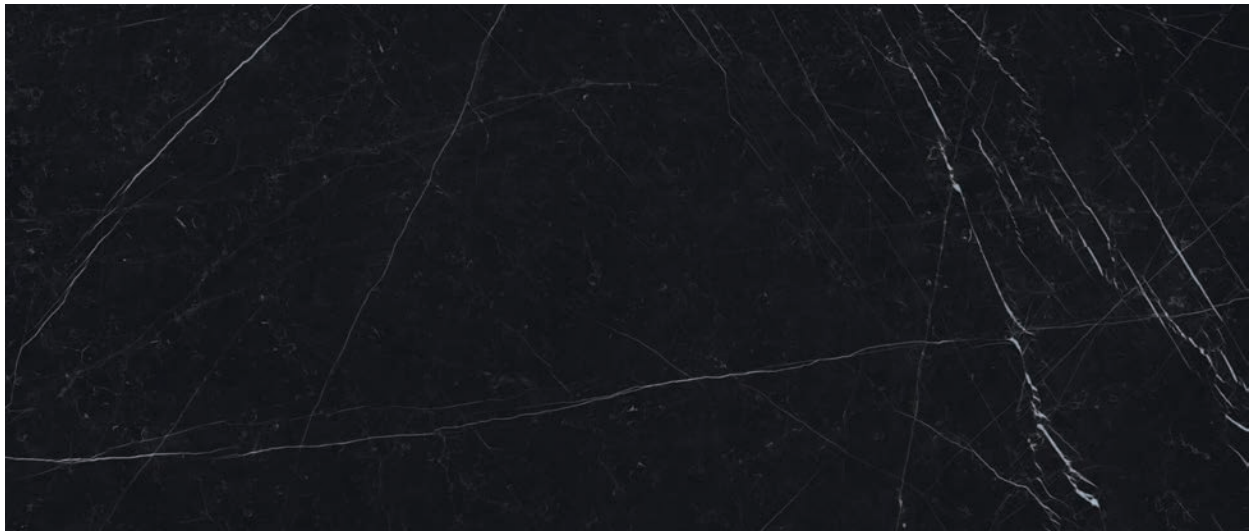


# DOLCISSIMA

Grey Basalt  
**MATTE**



Nero  
Marquinia  
**MATTE**  
**POLISHED**



Creamy  
Basalt  
**MATTE**



☒ In stock

Images are for reference only; please refer to live product for an accurate color representation.

**ROBERT F. HENRY**  
**TILE COMPANY**  
EST. 1923

# DOLCISSIMA

Sand  
Basalt  
**MATTE**



Cementi  
Grey  
**MATTE**



☒ In stock

Images are for reference only; please refer to live product for an accurate color representation.

**ROBERT F. HENRY**  
TILE COMPANY  
EST. 1923



# DOLCISSIMA

Macchia  
Vecchia



Calacatta  
White



Pietra Grey



☒ In stock

Images are for reference only; please refer to live product for an accurate color representation.

**ROBERT F. HENRY**  
TILE COMPANY  
EST. 1923

# DOLCISSIMA

Pietra  
Grey &  
Calacatta  
Oro



Calacatta  
Antico



☒ In stock

Images are for reference only; please refer to live product for an accurate color representation.

**ROBERT F. HENRY**  
TILE COMPANY  
EST. 1923



# DOLCISSIMA

Statuarietto



Grigio  
Trambisera



Arabescato  
Grey



☒ In stock

Images are for reference only; please refer to live product for an accurate color representation.

**ROBERT F. HENRY**  
TILE COMPANY  
EST. 1923



# INVISACOOK®

America's premier induction cook range that creates a countertop that you can cook directly on two to five burners. Easily operate through control pad or on through the app.

Create a seamless cooking surface that is only warm to the touch. Beautiful surfaces that are fun to cook on and can be a safer cooking surface than electric and gas.



Scan to watch  
Invisacook video

ROBERT F. HENRY TILE IS AN AUTHORIZED INVISACOOK® DEALER.

**ROBERT F. HENRY**  
TILE COMPANY  
EST. 1923





Cooktops: 2, 3,  
4 or 5 Burner



110V



220V



220V



220V

## 5-Piece Invisacookware®

5-Ply Stainless Steel with Copper  
Core, for ultimate performance.



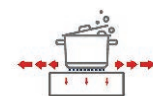
## InvisaMat

Anti-slip cooking mat



Induction cooktop Mat 100°F

No Induction cooktop Mat 204°F



VS



ROBERT F. HENRY TILE IS AN AUTHORIZED INVISACOOK® DEALER.

**ROBERT F. HENRY**  
TILE COMPANY  
EST. 1923

# ROBERT F. HENRY

## TILE COMPANY

EST. 1933

*Inspiring Homeowners for Generations*

HENRYTILE.COM



MONTGOMERY 334 269 2518

BIRMINGHAM 205 592 8615

TUSCALOOSA 205 556 1900

HUNTSVILLE 256 837 0500

NASHVILLE 615-712-9439

BATON ROUGE 225-224-7995

MEMPHIS 901-387-4525

PENSACOLA 850-469-9626