

# LIQUID ROCKS

- Handmade 100% recycled glass
- Perfect for pools + saunas
- Fourteen Shades In-stock
- No sealing needed
- 12"x 12" sheet mounted



Abyss Black ☒



Aqua Blue ☒



Clear Water ☒



Fresh Water Pearl ☒



Glacier White ☒



Miami Shores ☒



Mykonos ☒



Oyster Silver ☒

☒ In stock

Images are for reference only; please refer to live product for an accurate color representation.

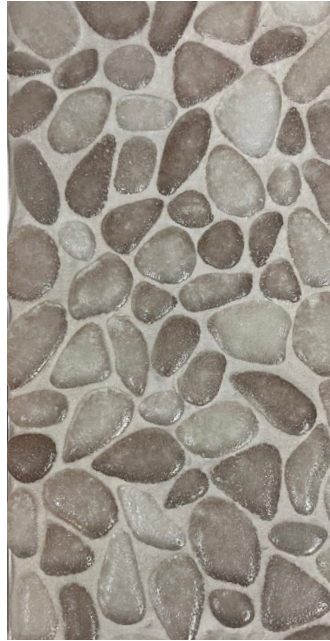
**ROBERT F. HENRY**  
**TILE COMPANY**  
EST. 1933



# LIQUID ROCKS



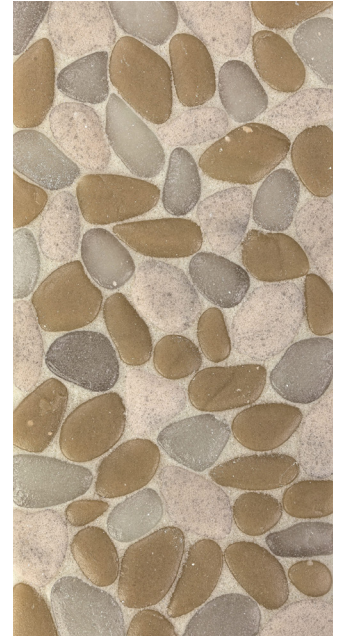
Pebble Beach ☒



River Brown ☒



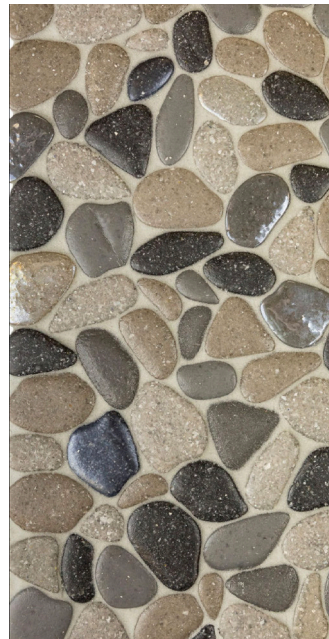
Riviera Shores ☒



Sandstone ☒



Sandy Beige ☒



Southern Lake ☒

☒ In stock

Images are for reference only; please refer to live product for an accurate color representation.

**ROBERT F. HENRY**  
**TILE COMPANY**  
EST. 1933



# LIQUID ROCKS



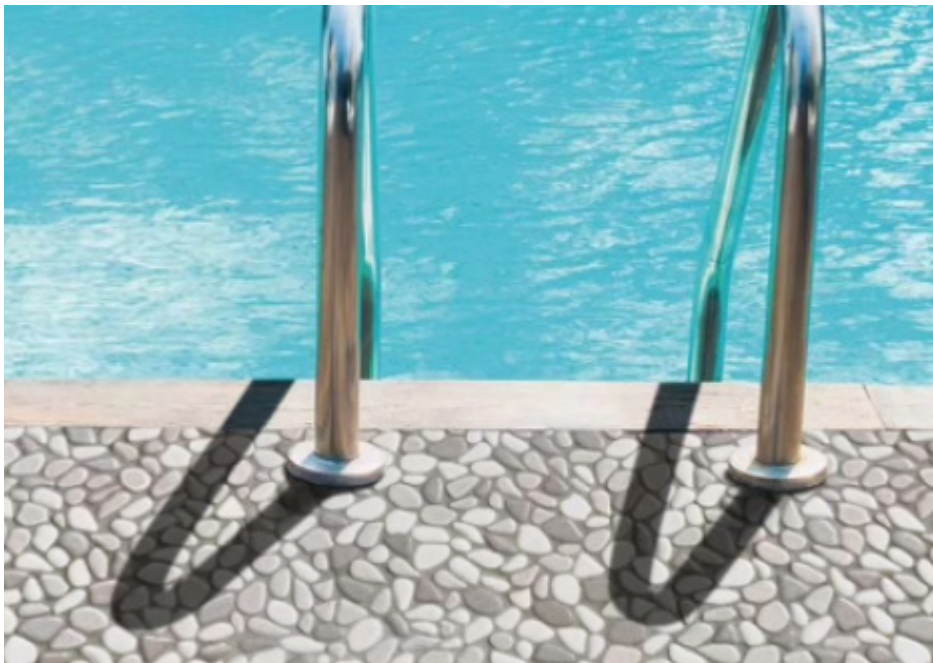
☑ In stock

Images are for reference only; please refer to live product for an accurate color representation.

**ROBERT F. HENRY**  
**TILE COMPANY**  
EST. 1933



# LIQUID ROCKS



# LIQUID ROCKS

Liquid Rocks is an ecological product handmade with 100% recycled glass under strict quality standards.

## RECOMMENDATIONS FOR USE AND INSTALLATION

Here are some basic recommendation for installation. Please follow TCNA guidelines for glass mosaics installation procedures. If any doubt please contact TCNA or your professional contractor.

For indoor and outdoor use as wall or floor covering, it can be installed in bathrooms, shower floors, kitchens, swimming pools, etc. t

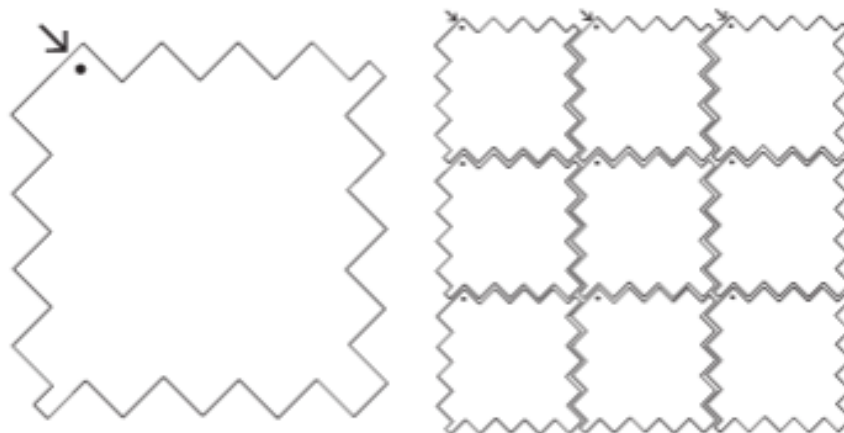
We recommend the use of a white thin set adhesive recommended for glass tiles.

For submerged applications such as swimming pools, fountains and saunas we recommend consulting the TCA methods and your qualified and experienced swimming pool contractor.

Prepare the surface (approved surfaces: fully cured concrete substrate or properly installed cement backerboard) where the product will adhere, clean before applying the Liquid Rocks sheet. Prepare materials according to manufacturer's recommendation to ensure durability of installation. Remove the paper film between the product sheets. Using a tile trowel spread the adhesive mixture evenly across the substrate, with the serrated side of the trowel combing the adhesive.

Place the Liquid Rocks sheets with the glass pebbles facing up and the mesh that holds the individual pieces facing down pressing firmly and evenly. The mesh that holds the pieces adheres to the thin set.

The alignment of the meshes is described in the following image:



Let the adhesive dry for at least 72 hours before applying the grout.

The tiling is placed using a rubber trowel, distributing evenly diagonally.

Follow the product manufacturer's recommendation, wait for the proper time, and wipe the surface with a damp sponge to remove excess.

Then wipe with a clean, dry cloth to achieve the final appearance.

Avoid the use of aggressive chemical agents such as soda, muriatic acid, concentrated sodium