

RESIDE

- Floors, wall, interior • Honed • Rectified • In Stock
- 24"x 48" is avail in textured R11

SHADE VARIATIONS

BLACK

STPIRT22448208

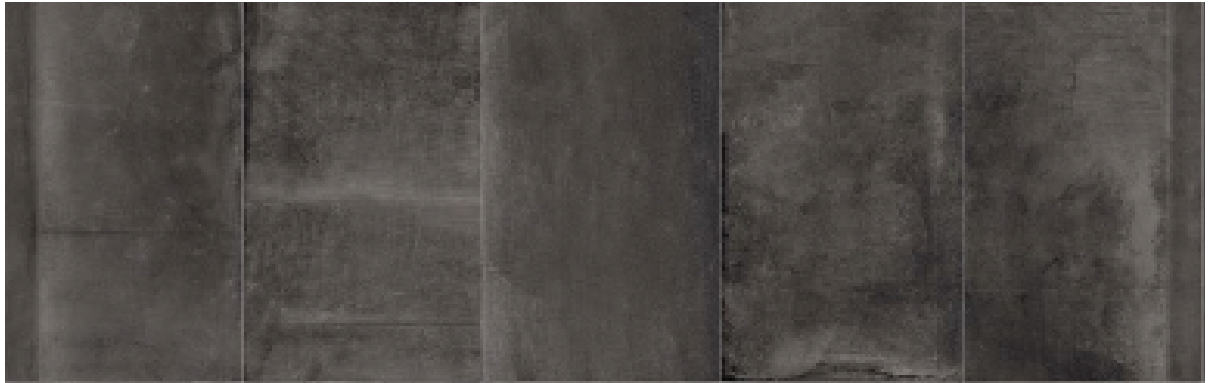
2"x 2" Mosaic ☒

12"x 24" ☒

4"x 24" BN ☒

24" x 48"

6"x 12" Cove Base



ASH GREY

STPIRT2448206

12"x 24" ☒

2"x 2" Mosaic ☒

4"x 24" BN ☒

24" x 48"

6"x 12" Cove Base



BROWN

STPIRT2448209

2"x 2" Mosaic ☒

12"x 24" ☒

4"x 24" BN ☒

24" x 48"

6"x12" Cove Base



BEIGE

STPIRT2448207

2"x 2" Mosaic ☒

12"x 24" ☒

4"x24" BN ☒

24" x 48"

6"x 12" Cove Base



☒ In stock

Images are for reference only; please refer to live product for an accurate color representation.

ROBERT F. HENRY
TILE COMPANY
EST. 1933

RESIDE



Images are for reference only; please refer to live product for an accurate color representation.

ROBERT F. HENRY
TILE COMPANY
EST. 1933

RESIDE



Images are for reference only; please refer to live product for an accurate color representation.

ROBERT F. HENRY
TILE COMPANY
EST. 1933

Physical Properties	ASTM Test	Industry Standards	IRIS US Results
Water Absorption	C373	Impervious < 0.5%	≤ 0.1%
Thickness Dimension	C499	Range ± 0.04 Inc. Max.	≤ ± 0.04 Inc.
Facial Dimension	C499	± 0.25 %	≤ ± 0.25%
Warpage Average Diagonal	C485	± 0.40 %	≤ ± 0.40%
Warpage Average Edge	C485	± 0.40 %	≤ ± 0.40%
Wedging	C502	± 0.25 %	≤ ± 0.25%
Bond Strength	C482	≥ 50 psi	≥ 200 psi
Breaking Strength	C648	≥ 250 lbf	≥ 400 lbf
Hardness (MOHS)	Scratch Test (No regulated)	Range 0 – 10	≥ 7
Visible Abrasion Resistance for Glaze Tiles	C1027	No Requirement, Range 0 – 5	IV
Frost Resistance	C1026	No sample must show alterations to surface	No evidence of Damage
Chemical Resistance	C650	No Requirement, Range E – A	Class A
Stain Resistance	C1378	No Requirement, Range E – A	Class A
DCOF – Matte	BOT 3000	≥ 0.42*	≥ 0.42*
Aesthetic Classification	Visual Evaluation Shade & Textures	No Requirement, Range V0 – V4	V3