

OFFROAD

- 5/16" thick • Textured • Rectified, color body • Made in USA
- Outdoor walkways, patios, pool decks, walls • Residential + commercial
- Indoor floors, walls, showers, back splash

ALPS

12" x 24"

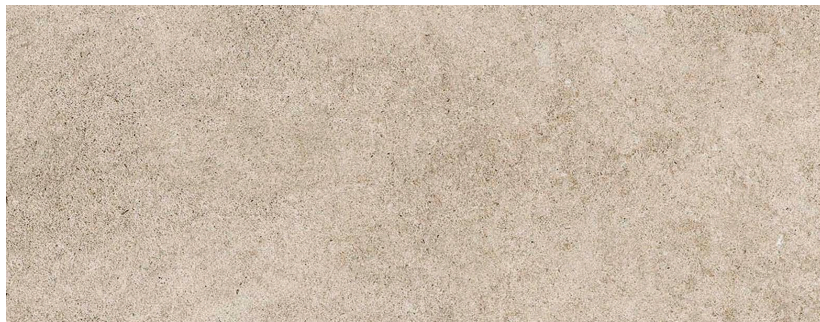
24" x 48"



MOHAVE

12" x 24"

24" x 48"



WHITE DESSERT

12" x 24"

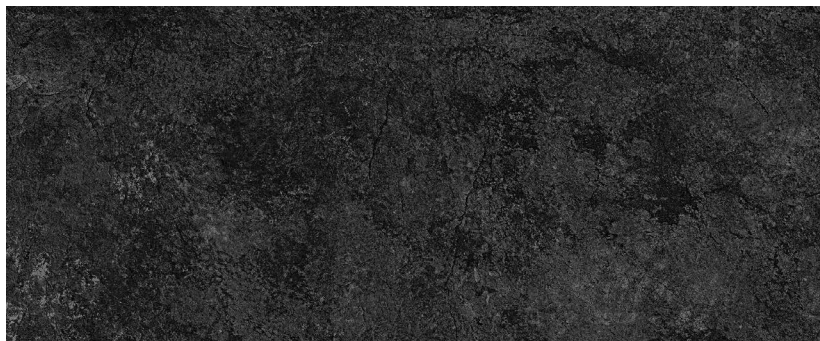
24" x 48"



KONA

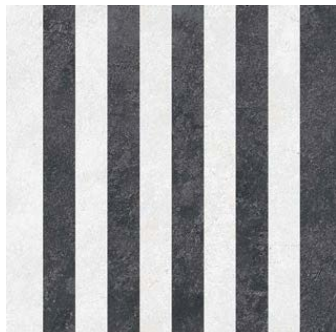
12" x 24"

24" x 48"



STRIA

24"x 24"



ARROW

24"x 24"

12"x 12"



Images are for reference only; please refer to live product for an accurate color representation.

OFFROAD OUTDOOR TILES



Images are for reference only; please refer to live product for an accurate color representation.

Physical – Visual Properties	ASTM TEST	Industry Standard	StonePeak
Water absorption	C373	Impervious <0.5%	≤0.1%
Thickness Dimension	C499	Range ± 0.04 Inc. Max.	≤±0.04 Inc.
Facial Dimension	C499	± 0.25 %	≤ ± 0.25%
Warpage average diagonal	C485	±0.40 %	≤ ± 0.40%
Warpage average edge	C485	±0.40 %	≤ ± 0.40%
Wedging	C502	± 0.25 %	≤ ± 0.25%
Bond Strength	C482	≥ 50 psi	≥ 200 psi
Breaking Strength	C648	≥250 lb.	≥ 400 lb.
Hardness (Mohs)	Scratch Test (No regulated)	Range 0 - 10	≥ 7
Visible Abrasion Resistance for Glaze tiles	C1027	No Requirement, Range 0 - 5	Class 4
Frost Resistance	C1026	No sample must show alterations to surface	No evidence of Damage
Chemical Resistance	C650	No Requirement, Range E - A	Class A
Stain Resistance	C1378	No Requirement, Range E - A	Class A*
DCOF Honed Finish	BOT 3000	≥0.42	≥0.45
DCOF TXT Finish	BOT 3000	≥0.42	≥0.65
Aesthetic Classification	Visual Evaluation Shade & texture	No Requirement, Range V0 -V4	V2

*Apply Honed finish

- Finishing : Honed and **Txt = similarly R11 ant slippery**