

FOUNDRY

- Metal inspires porcelain • Matte • Walls, floors
- Backsplash, showers • Residential, commercial

OXIDE

- ☒ 2"x 2" Mos
 - ☒ 4"x 12" BN
 - ☒ 12"x 24"
- 24"x 24" avail



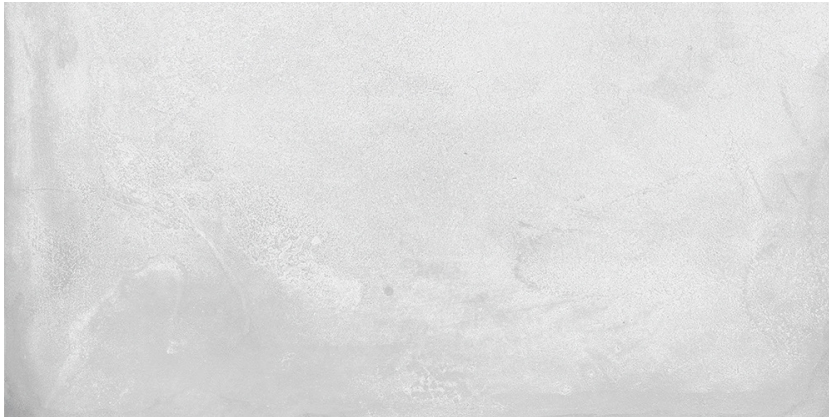
ALLOY

- ☒ 2"x 2" Mos
 - ☒ 4"x 12" BN
 - ☒ 12"x 24"
- 24"x 24" avail



ZINC

- ☒ 2"x 2" Mos
 - ☒ 4"x 12" BN
 - ☒ 12"x 24"
- 24"x 24" avail



RAIL

- ☒ 2"x 2" Mos
 - ☒ 4"x 12" BN
 - ☒ 12"x 24"
- 24"x 24" avail



☒ In stock

Images are for reference only; please refer to live product for an accurate color representation.

ROBERT E. HENRY
TILE COMPANY
EST. 1933

FOUNDRY



Images are for reference only; please refer to live product for an accurate color representation.

FOUNDRY



Images are for reference only; please refer to live product for an accurate color representation.

FOUNDRY










Images are for reference only; please refer to live product for an accurate color representation.

FOUNDRY



Images are for reference only; please refer to live product for an accurate color representation.

	TECHNICAL FEATURE	ASTM TEST	VALUE REQUIRED ANSI A 137.1-2012	CAESAR AVERAGE VALUE
	Facial dimension	ASTM C-499	$\pm 0,5\%$ o $\pm 2,0$ mm	In accordance to ANSI A 137.1-2012
	Thickness	ASTM C-499	0,040 inch max (1 mm)	
	Wedging	ASTM C-502	$\leq 0,5\%$ (+/- 2 mm)	
	Warpage diagonal	ASTM C-485	$\leq 0,5\%$ (+/- 2 mm)	
	Warpage edge (for tile <610x610 mm)	ASTM C-485	$\pm 0,40\%$ or $\pm 1,3$ mm	
	Warpage edge (for tile >610x610 mm)	ASTM C-485	$\pm 0,40\%$ or $\pm 1,8$ mm	
	Water absorption	ASTM C-373	$\leq 0,5\%$	Passed "impervious tiles" Class P1
	Breaking strength	ASTM C-648	≥ 250 lbs (≥ 1113 N)	≥ 400 lbs
	Freeze thaw	ASTM C-1026	No damages	In accordance
	Chemical resistance	ASTM C-650	As reported	Unaffected
	MOHS hardness			6
	Dynamic Coefficient of Friction		0,42	In accordance